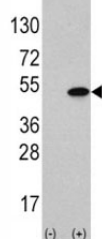


## ATF4 Antibody (F40076)

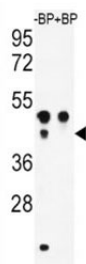
Catalog No.	Formulation	Size
F40076-0.4ML	In 1X PBS, pH 7.4, with 0.09% sodium azide	0.4 ml
F40076-0.08ML	In 1X PBS, pH 7.4, with 0.09% sodium azide	0.08 ml

[Bulk quote request](#)

<b>Availability</b>	1-3 business days
<b>Species Reactivity</b>	Human
<b>Format</b>	Antigen affinity purified
<b>Clonality</b>	Polyclonal (rabbit origin)
<b>Isotype</b>	Rabbit Ig
<b>Purity</b>	Antigen affinity
<b>UniProt</b>	Q96AQ3
<b>Applications</b>	Western Blot : 1:1000
<b>Limitations</b>	This ATF4 antibody is available for research use only.



Western blot analysis of ATF4 antibody and 293 cell lysate (2 ug/lane) either nontransfected (Lane 1) or transiently transfected with the ATF4 gene (2).



Western blot analysis of ATF4 antibody pre-incubated without (Lane 1) and with (2) blocking peptide in WiDr lysate

## Description

ATF4 is a transcription factor that was originally identified as a widely expressed mammalian DNA binding protein that could bind a tax-responsive enhancer element in the LTR of HTLV-1. The encoded protein was also isolated and characterized as the cAMP-response element binding protein 2 (CREB-2). ATF4 belongs to a family of DNA-binding proteins that includes the AP-1 family of transcription factors, cAMP-response element binding proteins (CREBs) and CREB-like proteins. These transcription factors share a leucine zipper region that is involved in protein-protein interactions, located C-terminal to a stretch of basic amino acids that functions as a DNA binding domain.

## Application Notes

Titration of the ATF4 antibody may be required due to differences in protocols and secondary/substrate sensitivity.

## Immunogen

A portion of amino acids 220-252 from the human protein was used as the immunogen for this ATF4 antibody.

## Storage

Aliquot the ATF4 antibody and store frozen at -20oC or colder. Avoid repeated freeze-thaw cycles.