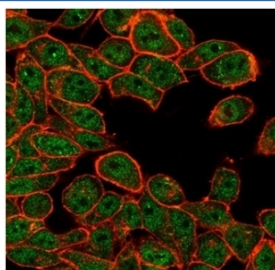


## ATF2 Antibody [clone PCRP-ATF2-1B4] (V9624)

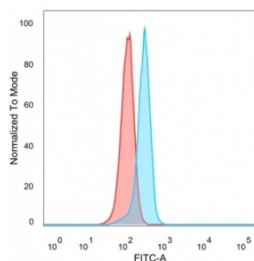
Catalog No.	Formulation	Size
V9624-100UG	0.2 mg/ml in 1X PBS with 0.1 mg/ml BSA (US sourced), 0.05% sodium azide	100 ug
V9624-20UG	0.2 mg/ml in 1X PBS with 0.1 mg/ml BSA (US sourced), 0.05% sodium azide	20 ug
V9624SAF-100UG	1 mg/ml in 1X PBS; BSA free, sodium azide free	100 ug

[Bulk quote request](#)

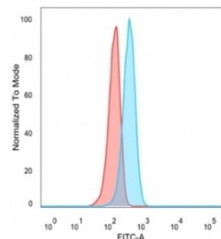
<b>Availability</b>	1-3 business days
<b>Species Reactivity</b>	Human
<b>Format</b>	Purified
<b>Clonality</b>	Monoclonal (mouse origin)
<b>Isotype</b>	Mouse IgG2b
<b>Clone Name</b>	PCRP-ATF2-1B4
<b>Purity</b>	Protein A/G affinity
<b>UniProt</b>	P15336
<b>Localization</b>	Nucleus
<b>Applications</b>	Flow Cytometry : 1-2ug/million cells Immunofluorescence : 1-2ug/ml Western Blot : 1-2ug/ml
<b>Limitations</b>	This ATF2 antibody is available for research use only.



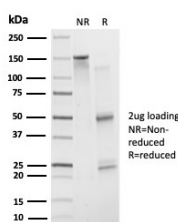
Immunofluorescent staining of human HeLa cells stained using ATF2 antibody (green, clone PCRP-ATF2-1B4) and phalloidin (red).



FACS staining of PFA-fixed human HeLa cells with ATF2 antibody (blue, clone PCR-ATF2-1B4), and unstained cells (red).

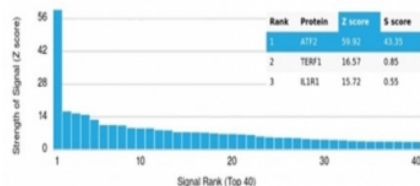


FACS staining of PFA-fixed human U-87 MG cells with ATF2 antibody (blue, clone PCR-ATF2-1B4), and unstained cells (red).



SDS-PAGE analysis of purified, BSA-free ATF2 antibody (clone PCR-ATF2-1B4) as confirmation of integrity and purity.

#### Human Protein Microarray Specificity Validation



Analysis of HuProt(TM) microarray containing more than 19,000 full-length human proteins using ATF2 antibody (clone PCR-ATF2-1B4). These results demonstrate the foremost specificity of the PCR-ATF2-1B4 mAb. Z- and S- score: The Z-score represents the strength of a signal that an antibody (in combination with a fluorescently-tagged anti-IgG secondary Ab) produces when binding to a particular protein on the HuProt(TM) array. Z-scores are described in units of standard deviations (SD's) above the mean value of all signals generated on that array. If the targets on the HuProt(TM) are arranged in descending order of the Z-score, the S-score is the difference (also in units of SD's) between the Z-scores. The S-score therefore represents the relative target specificity of an Ab to its intended target.

## Description

This gene encodes a transcription factor that is a member of the leucine zipper family of DNA binding proteins. The encoded protein has been identified as a moonlighting protein based on its ability to perform mechanistically distinct functions. This protein binds to the cAMP-responsive element (CRE), an octameric palindrome. It forms a homodimer or a heterodimer with c-Jun and stimulates CRE-dependent transcription. This protein is also a histone acetyltransferase (HAT) that specifically acetylates histones H2B and H4 in vitro; thus it may represent a class of sequence-specific factors that activate transcription by direct effects on chromatin components. The encoded protein may also be involved in cells DNA damage response independent of its role in transcriptional regulation. Several alternatively spliced transcript variants have been found for this gene.

## Application Notes

Optimal dilution of the ATF2 antibody should be determined by the researcher.

## Immunogen

Recombinant full-length human ATF2 protein was used as the immunogen for the ATF2 antibody.

## Storage

Aliquot the ATF2 antibody and store frozen at -20oC or colder. Avoid repeated freeze-thaw cycles.