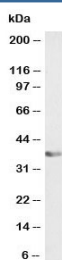


## ATF1 Antibody (R36478)

Catalog No.	Formulation	Size
R36478-100UG	0.5 mg/ml in 1X TBS, pH7.3, with 0.5% BSA (US sourced) and 0.02% sodium azide	100 ug

### Bulk quote request

Availability	1-3 business days
Species Reactivity	Human
Format	Antigen affinity purified
Host	Goat
Clonality	Polyclonal (goat origin)
Isotype	Goat Ig
Purity	Antigen affinity
UniProt	P18846
Applications	Western Blot : 0.1-0.3ug/ml ELISA (peptide) LOD : 1:8000
Limitations	This ATF1 antibody is available for research use only.



Western blot testing of human A431 cell lysate (nuclear fraction) with ATF1 antibody at 0.1ug/ml. Routinely observed molecular weight: 29-35 kDa.

## Description

ATF1 an activating transcription factor, which belongs to the ATF subfamily and bZIP (basic-region leucine zipper) family. It influences cellular physiologic processes by regulating the expression of downstream target genes, which are related to growth, survival, and other cellular activities. [Wiki]

## Application Notes

Optimal dilution of the ATF1 antibody should be determined by the researcher.

## **Immunogen**

Amino acids EDSHKSTTSETAPQ were used as the immunogen for this ATF1 antibody.

## **Storage**

Aliquot and store the ATF1 antibody at -20oC.