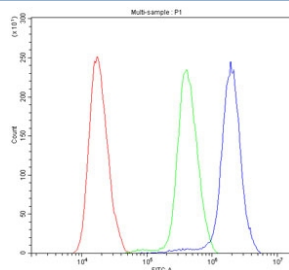


ATF1 Antibody (R31551)

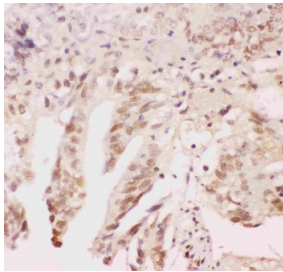
Catalog No.	Formulation	Size
R31551	0.5mg/ml if reconstituted with 0.2ml sterile DI water	100 ug

Bulk quote request

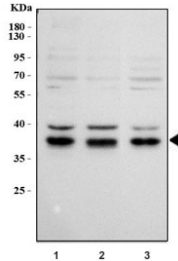
Availability	1-3 business days
Species Reactivity	Human
Format	Antigen affinity purified
Host	Rabbit
Clonality	Polyclonal (rabbit origin)
Isotype	Rabbit IgG
Purity	Antigen affinity
Buffer	Lyophilized from 1X PBS with 2.5% BSA and 0.025% sodium azide
UniProt	P18846
Gene ID	466
Localization	Nuclear
Applications	Western Blot : 0.5-1ug/ml Immunohistochemistry (FFPE) : 0.5-1ug/ml Flow Cytometry : 1-3ug/million cells
Limitations	This ATF1 antibody is available for research use only.



Flow cytometry testing of human SiHa cells with ATF1 antibody at 1ug/million cells (blocked with goat sera); Red=cells alone, Green=isotype control, Blue= ATF1 antibody.



IHC staining of FFPE human intestinal cancer tissue with ATF1 antibody. HIER: boil tissue sections in pH6 citrate buffer for 20 min and allow to cool before testing.



Western blot testing of human 1) HeLa, 2) 293T and 3) K562 cell lysate with ATF1 antibody. Routinely observed molecular weight: 29-35 kDa.

Description

Activating transcription factor 1 is a protein that in humans is encoded by the ATF1 gene. This gene encodes an activating transcription factor which belongs to the ATF subfamily and bZIP (basic-region leucine zipper) family. It influences cellular physiologic processes by regulating the expression of downstream target genes, which are related to growth, survival, and other cellular activities. It is phosphorylated at serine 63 in its kinase-inducible domain by serine/threonine kinases, cAMP-dependent protein kinase A, calmodulin-dependent protein kinase I/II, mitogen- and stress-activated protein kinase and cyclin-dependent kinase 3 (cdk-3). Its phosphorylation enhances its transactivation and transcriptional activities, and enhances cell transformation.

Application Notes

The stated application concentrations are suggested starting points. Titration of the ATF1 antibody may be required due to differences in protocols and secondary/substrate sensitivity.

Immunogen

Human partial recombinant protein (AA 1-271) was used as the immunogen for this ATF1 antibody.

Storage

After reconstitution, the ATF1 antibody can be stored for up to one month at 4°C. For long-term, aliquot and store at -20°C. Avoid repeated freezing and thawing.