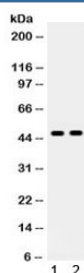


## AT1R Antibody (R32059)

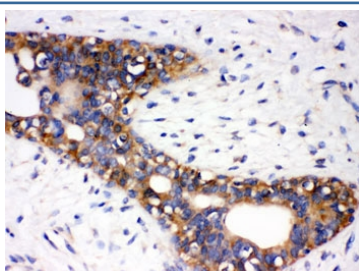
Catalog No.	Formulation	Size
R32059	0.5mg/ml if reconstituted with 0.2ml sterile DI water	100 ug

**Bulk quote request**

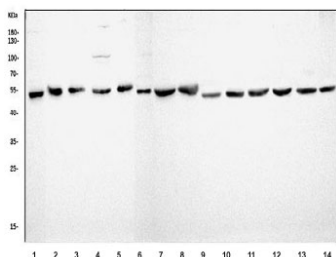
<b>Availability</b>	1-3 business days
<b>Species Reactivity</b>	Human, Mouse, Rat, Monkey
<b>Format</b>	Antigen affinity purified
<b>Clonality</b>	Polyclonal (rabbit origin)
<b>Isotype</b>	Rabbit IgG
<b>Purity</b>	Antigen affinity
<b>Buffer</b>	Lyophilized from 1X PBS with 2% Trehalose
<b>UniProt</b>	P30556
<b>Applications</b>	Western Blot : 0.1-0.5ug/ml Immunohistochemistry (FFPE) : 0.5-1ug/ml
<b>Limitations</b>	This AT1R antibody is available for research use only.



Western blot testing of 1) human HeLa and 2) mouse HEPA1-6 cell lysate with AT1R antibody. Observed molecular weight ~41-50 kDa depending on glycosylation level.



IHC testing of FFPE human breast cancer tissue with AT1R antibody. HIER: Boil the paraffin sections in pH 6, 10mM citrate buffer for 20 minutes and allow to cool prior to staining.



Western blot testing of 1) human HEK293, 2) human T-47D, 3) human PC-3, 4) human U-87 MG, 5) human HepG2, 6) monkey COS-7, 7) rat brain, 8) rat liver, 9) rat kidney, 10) rat RH35, 11) mouse brain, 12) mouse liver, 13) mouse kidney and 14) mouse HEPA1-6 lysate with AT1R antibody. Observed molecular weight ~41-50 kDa depending on glycosylation level.

## Description

AGTR1, or AT1R, is known as Angiotensin II Type 1 Receptor. Angiotensin II is a potent vasopressor hormone and a primary regulator of aldosterone secretion. It is an important effector controlling blood pressure and volume in the cardiovascular system. And it acts through at least two types of receptors. This gene encodes the type 1 receptor which is thought to mediate the major cardiovascular effects of angiotensin II. Moreover, this gene may play a role in the generation of reperfusion arrhythmias following restoration of blood flow to ischemic or infarcted myocardium. It was previously thought that a related gene, denoted as AGTR1B, existed; however, it is now believed that there is only one type 1 receptor gene in humans. Multiple alternatively spliced transcript variants have been reported for this gene.

## Application Notes

Optimal dilution of the AT1R antibody should be determined by the researcher.

## Immunogen

Amino acids MILNSSTEDGIKRIQDDCPKAGRHNYIF of human AGTR1 were used as the immunogen for the AT1R antibody.

## Storage

After reconstitution, the AT1R antibody can be stored for up to one month at 4°C. For long-term, aliquot and store at -20°C. Avoid repeated freezing and thawing.