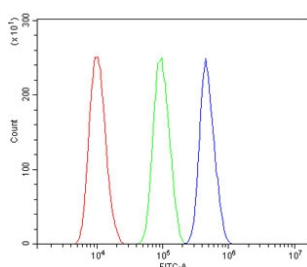


## ASXL1 Antibody (RQ6039)

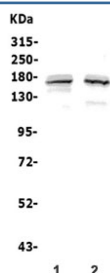
Catalog No.	Formulation	Size
RQ6039	0.5mg/ml if reconstituted with 0.2ml sterile DI water	100 ug

**Bulk quote request**

<b>Availability</b>	1-3 business days
<b>Species Reactivity</b>	Human
<b>Format</b>	Antigen affinity purified
<b>Clonality</b>	Polyclonal (rabbit origin)
<b>Isotype</b>	Rabbit IgG
<b>Purity</b>	Affinity purified
<b>Buffer</b>	Lyophilized from 1X PBS with 2% Trehalose and 0.025% sodium azide
<b>UniProt</b>	Q8IXJ9
<b>Applications</b>	Western Blot : 0.5-1ug/ml Flow Cytometry : 1-3ug/million cells Direct ELISA : 0.1-0.5ug/ml
<b>Limitations</b>	This ASXL1 antibody is available for research use only.



Flow cytometry testing of human SiHa cells with ASXL1 antibody at 1ug/million cells (blocked with goat sera); Red=cells alone, Green=isotype control, Blue= ASXL1 antibody.



Western blot testing of human 1) COLO-320 and 2) Jurkat lysate with ASXL1 antibody. Predicted molecular weight ~165 kDa.

## Description

Putative Polycomb group protein ASXL1 is a protein that in humans is encoded by the ASXL1 gene. This gene is similar to the Drosophila additional sex combs gene, which encodes a chromatin-binding protein required for normal determination of segment identity in the developing embryo. The protein is a member of the Polycomb group of proteins, which are necessary for the maintenance of stable repression of homeotic and other loci. The protein is thought to disrupt chromatin in localized areas, enhancing transcription of certain genes while repressing the transcription of other genes. The protein encoded by this gene functions as a ligand-dependent co-activator for retinoic acid receptor in cooperation with nuclear receptor coactivator 1. Mutations in this gene are associated with myelodysplastic syndromes and chronic myelomonocytic leukemia. Alternative splicing results in multiple transcript variants.

## Application Notes

Optimal dilution of the ASXL1 antibody should be determined by the researcher.

## Immunogen

Recombinant human protein (amino acids A14-R1541) was used as the immunogen for the ASXL1 antibody.

## Storage

After reconstitution, the ASXL1 antibody can be stored for up to one month at 4°C. For long-term, aliquot and store at -20°C. Avoid repeated freezing and thawing.