

ASRGL1 Antibody [clone CRASH/1289] (V3230)

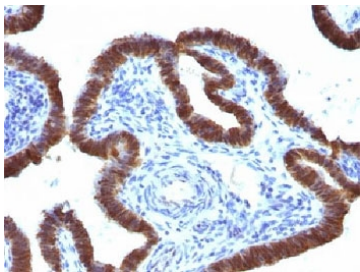
Catalog No.	Formulation	Size
V3230-100UG	0.2 mg/ml in 1X PBS with 0.1 mg/ml BSA (US sourced) and 0.05% sodium azide	100 ug
V3230-20UG	0.2 mg/ml in 1X PBS with 0.1 mg/ml BSA (US sourced) and 0.05% sodium azide	20 ug
V3230SAF-100UG	1 mg/ml in 1X PBS; BSA free, sodium azide free	100 ug

[Bulk quote request](#)

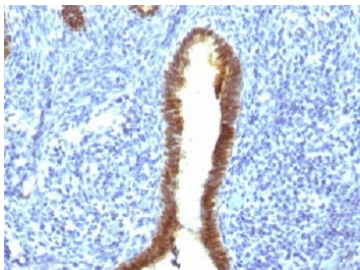
Species Reactivity	Human
Format	Purified
Clonality	Monoclonal (mouse origin)
Isotype	Mouse IgG1, kappa
Clone Name	CRASH/1289
Purity	Protein G affinity chromatography
Buffer	1X PBS, pH 7.4
Gene ID	80150
Localization	Cytoplasmic, nuclear
Applications	Immunohistochemistry (FFPE) : 0.5-1ug/ml for 30 min at RT
Limitations	This ASRGL1 antibody is available for research use only.



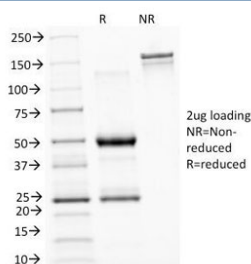
IHC testing of FFPE human endometrium with ASRGL1 antibody (clone CRASH/1289).
Required HIER: steam sections in 10mM Tris with 1mM EDTA, pH9, for 10-20 min.



IHC testing of FFPE human fallopian tube with ASRGL1 antibody (clone CRASH/1289).
Required HIER: steam sections in 10mM Tris with 1mM EDTA, pH9, for 10-20 min.



IHC testing of FFPE human uterus with ASRGL1 antibody (clone CRASH/1289).
Required HIER: steam sections in 10mM Tris with 1mM EDTA, pH9, for 10-20 min.



SDS-PAGE Analysis of Purified, BSA-Free ASRGL1 Antibody (clone CRASH/1289).
Confirmation of Integrity and Purity of the Antibody.

Description

ASRGL1 (Asparaginase-like protein 1), also known as CRASH, belongs to the Ntn-hydrolase family. Asparaginases utilize asparagine as a substrate to produce aspartic acid and ammonia. ASRGL1 has been identified as a autoantigenic protein that is present in the mid-piece of sperm after obstruction of the male reproductive tract. It is expressed highly in testis, but is also expressed in brain, kidney and gastrointestinal tissues. High levels of ASRGL1 have also been identified in ovarian, uterine and mammary tumors in comparison with normal tissues of the same origin.

Application Notes

The concentration stated for each application is a general starting point. Variations in protocols, secondaries and substrates may require the ASRGL1 antibody to be titrated up or down for optimal performance.

Immunogen

A human partial recombinant protein was used as the immunogen for this ASRGL1 antibody.

Storage

Store the ASRGL1 antibody at 2-8°C (with azide) or aliquot and store at -20°C or colder (without azide).

References (1)

