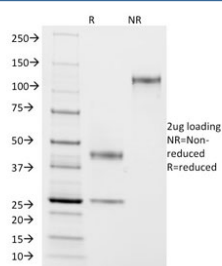


## ASRGL1 Antibody / ALP1 [clone CRASH/1290] (V8455)

Catalog No.	Formulation	Size
V8455-100UG	0.2 mg/ml in 1X PBS with 0.1 mg/ml BSA (US sourced) and 0.05% sodium azide	100 ug
V8455-20UG	0.2 mg/ml in 1X PBS with 0.1 mg/ml BSA (US sourced) and 0.05% sodium azide	20 ug
V8455SAF-100UG	1 mg/ml in 1X PBS; BSA free, sodium azide free	100 ug

**Bulk quote request**

<b>Availability</b>	1-3 business days
<b>Species Reactivity</b>	Human
<b>Format</b>	Purified
<b>Clonality</b>	Monoclonal (mouse origin)
<b>Isotype</b>	Mouse IgG1, kappa
<b>Clone Name</b>	CRASH/1290
<b>Purity</b>	Protein G affinity chromatography
<b>UniProt</b>	Q7L266
<b>Localization</b>	Cytoplasmic, nuclear
<b>Applications</b>	ELISA : order Ab without BSA for coating
<b>Limitations</b>	This ASRGL1 antibody is available for research use only.



SDS-PAGE analysis of purified, BSA-free ASRGL1 antibody (clone CRASH/1290) as confirmation of integrity and purity.

## Description

ASRGL1 (Asparaginase-like protein 1), also known as CRASH, is a 308 amino acid protein belonging to the Ntn-hydrolase family. Asparaginases utilize asparagine as a substrate to produce aspartic acid and ammonia. ASRGL1 has

been identified as a autoantigenic protein that is present in the mid-piece of sperm after obstruction of the male reproductive tract. ASRGL1 is expressed highly in testis, but is also expressed in brain, kidney and gastrointestinal tissues. High levels of ASRGL1 have also been identified in ovarian, uterine and mammary tumors in comparison with normal tissues of the same origin.

## **Application Notes**

Optimal dilution of the ASRGL1 antibody should be determined by the researcher.

## **Immunogen**

Recombinant human ASRGL1 fragment from the human protein was used as the immunogen for the ASRGL1 antibody.

## **Storage**

Store the ASRGL1 antibody at 2-8oC (with azide) or aliquot and store at -20oC or colder (without azide).