

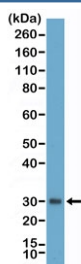
Asprosin Antibody [clone RM463] (R20475)

Catalog No.	Formulation	Size
R20475-0.1ML	Antibody in PBS with 50% glycerol, 1% BSA and 0.09% sodium azide	100 ul

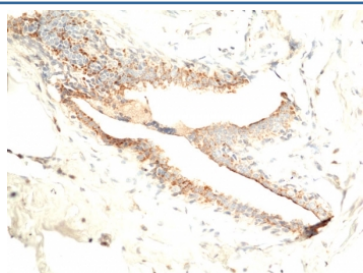
Recombinant **RABBIT MONOCLONAL**

[Bulk quote request](#)

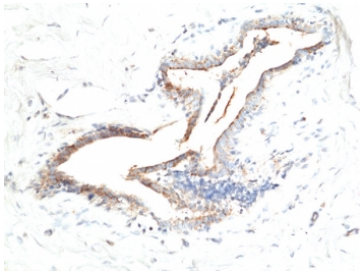
Availability	1-3 business days
Species Reactivity	Human
Format	Purified
Clonality	Recombinant Rabbit Monoclonal
Isotype	Rabbit IgG
Clone Name	RM463
Purity	Protein A purified from animal origin-free supernatant
UniProt	P35555
Applications	Immunohistochemistry (FFPE) : 1:100-1:200 Western Blot : 1:1000-1:25000
Limitations	This recombinant Asprosin antibody is available for research use only.



Western blot testing of human plasma with recombinant Asprosin antibody at 1:25000. Predicted molecular weight ~16 kDa but may be observed at higher molecular weights due to glycosylation.



IHC staining of FFPE human breast tissue with recombinant Asprosin antibody at 1:100.



IHC staining of FFPE human breast tissue with recombinant Asprosin antibody at 1:100.

Description

This antibody reacts to human Asprosin.

Application Notes

The stated application concentrations are suggested starting points. Titration of the recombinant Asprosin antibody may be required due to differences in protocols and secondary/substrate sensitivity.

Immunogen

Recombinant full-length human Asprosin protein was used as the immunogen for the recombinant Asprosin antibody.

Storage

Store the recombinant Asprosin antibody at -20°C.