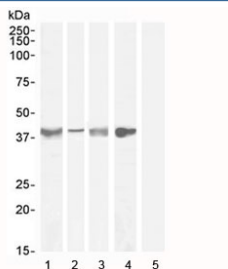


## Asporin Antibody (R34334)

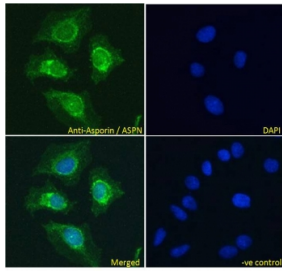
| Catalog No.  | Formulation   | Size   |
|--------------|---|--------|
| R34334-100UG | 0.5 mg/ml in 1X TBS, pH7.3, with 0.5% BSA (US sourced) and 0.02% sodium azide | 100 ug |

[Bulk quote request](#)

|                             |  |
|-----------------------------|--|
| <b>Availability</b>         | 1-3 business days  |
| <b>Species Reactivity</b>   | Human  |
| <b>Predicted Reactivity</b> | Mouse, Rat   |
| <b>Format</b>               | Antigen affinity purified  |
| <b>Host</b>                 | Goat   |
| <b>Clonality</b>            | Polyclonal (goat origin)   |
| <b>Isotype</b>              | Goat Ig  |
| <b>Purity</b>               | Antigen affinity   |
| <b>Gene ID</b>              | 54829  |
| <b>Applications</b>         | Western Blot : 0.3-1ug/ml<br>IF/ICC : 10ug/ml<br>Enzyme ImmunoAssay : binds recombinant protein<br>ELISA (peptide) LOD : 1:64000 |
| <b>Limitations</b>          | This Asporin antibody is available for research use only.  |



Western blot testing of Asporin antibody with lysate from 1) human tonsil (Ab at 1ug/ml), 2) human uterus (Ab at 0.3ug/ml), 3) mouse skeletal muscle (Ab at 0.3ug/ml), 4) rat skeletal muscle (Ab at 1ug/ml) and 5) human cerebellum (negative control, Ab at 1ug/ml). Predicted molecular weight ~40 kDa.



IF/ICC testing of fixed and permeabilized human HeLa cells with Asporin antibody (green) at 10ug/ml and DAPI nuclear stain (blue).

## Description

Additional name(s) for this target protein: PLAP1, SLRR1C; ASPN

## Application Notes

Optimal dilution of the Asporin antibody should be determined by the researcher.

## Immunogen

Amino acids IHENKVKKIQKDT were used as the immunogen for this Asporin antibody.

## Storage

Aliquot and store the Asporin antibody at -20oC.