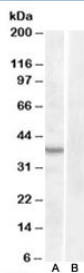


ASNA1 Antibody (R35020)

Catalog No.	Formulation	Size
R35020-100UG	0.5 mg/ml in 1X TBS, pH7.3, with 0.5% BSA (US sourced) and 0.02% sodium azide	100 ug

[Bulk quote request](#)

Availability	1-3 business days
Species Reactivity	Human, Mouse, Rat
Predicted Reactivity	Cow
Format	Antigen affinity purified
Clonality	Polyclonal (goat origin)
Isotype	Goat Ig
Purity	Antigen affinity
Gene ID	439
Applications	Western Blot : 0.3-1ug/ml ELISA (peptide) LOD : 1:2000
Limitations	This ASNA1 antibody is available for research use only.



Western blot testing of mouse kidney lysate with ASNA1 antibody at 1ug/ml with [B] and without [A] blocking/immunizing peptide. Predicted molecular weight: ~39kDa.

Description

Additional name(s) for this target protein: ArsA arsenite transporter ATP-binding 1

Application Notes

Optimal dilution of the ASNA1 antibody should be determined by the researcher.

Immunogen

Amino acids PHEVRGADKVNT were used as the immunogen for this ASNA1 antibody.

Storage

Aliquot and store the ASNA1 antibody at -20oC.