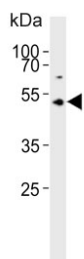


ASMT Antibody / Acetylserotonin O-methyltransferase (F54808)

Catalog No.	Formulation	Size
F54808-0.4ML	In 1X PBS, pH 7.4, with 0.09% sodium azide	0.4 ml
F54808-0.08ML	In 1X PBS, pH 7.4, with 0.09% sodium azide	0.08 ml

[Bulk quote request](#)

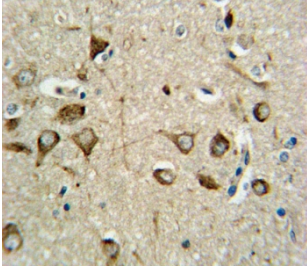
Availability	1-3 business days
Species Reactivity	Human
Format	Purified
Host	Rabbit
Clonality	Polyclonal (rabbit origin)
Isotype	Rabbit Ig
Purity	Antigen affinity purified
UniProt	P46597
Localization	Cytoplasmic
Applications	Western Blot : 1:500-1:1000 Flow Cytometry : 1:10-1:50 (1x10 ⁶ cells) Immunohistochemistry (FFPE) : 1:10-1:50
Limitations	This ASMT antibody is available for research use only.



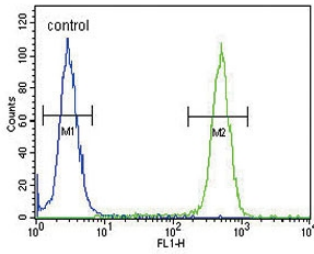
Western blot testing of human Y79 cell lysate with ASMT antibody. Predicted molecular weight ~38 kDa.

kDa
95
72
55
36
28

Western blot testing of human HEK293 cell lysate with ASMT antibody. Predicted molecular weight ~38 kDa.



IHC testing of FFPE human brain tissue with ASMT antibody. HIER: steam section in pH6 citrate buffer for 20 min and allow to cool prior to staining.



Flow cytometry testing of human HEK293 cells with ASMT antibody; Blue=isotype control, Green= ASMT antibody.

Description

ASMT belongs to the methyltransferase superfamily, and is located in the pseudoautosomal region (PAR) at the end of the short arms of the X and Y chromosomes. The encoded enzyme catalyzes the final reaction in the synthesis of melatonin, and is abundant in the pineal gland.

Application Notes

The stated application concentrations are suggested starting points. Titration of the ASMT antibody may be required due to differences in protocols and secondary/substrate sensitivity.

Immunogen

A portion of amino acids 212-241 from the human protein was used as the immunogen for the ASMT antibody.

Storage

Aliquot the ASMT antibody and store frozen at -20oC or colder. Avoid repeated freeze-thaw cycles.

