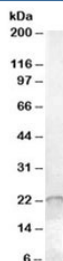


ASF1A Antibody (R33736)

Catalog No.	Formulation	Size
R33736-100UG	0.5 mg/ml in 1X TBS, pH7.3, with 0.5% BSA (US sourced) and 0.02% sodium azide	100 ug

[Bulk quote request](#)

Availability	1-3 business days
Species Reactivity	Human
Predicted Reactivity	Dog, Mouse, Rat
Format	Antigen affinity purified
Host	Goat
Clonality	Polyclonal (goat origin)
Isotype	Goat Ig
Purity	Antigen affinity
Gene ID	25842
Applications	Western Blot : 0.01-0.03ug/ml ELISA (peptide) LOD : 1:1000
Limitations	This ASF1A antibody is available for research use only.



Western blot testing of Jurkat cell lysate with ASF1A antibody at 0.01ug/ml. Predicted molecular weight: ~23kDa.

Description

Additional name(s) for this target protein: Silencing function 1A; HSPC146

Application Notes

Optimal dilution of the ASF1A antibody should be determined by the researcher.

Immunogen

Amino acids EDNTEKLEDAE were used as the immunogen for this ASF1A antibody.

Storage

Aliquot and store the ASF1A antibody at -20oC.