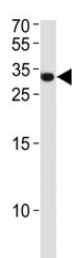


ASCL1 Antibody / MASH1 (F47525)

Catalog No.	Formulation	Size
F47525-0.4ML	In 1X PBS, pH 7.4, with 0.09% sodium azide	0.4 ml
F47525-0.08ML	In 1X PBS, pH 7.4, with 0.09% sodium azide	0.08 ml

[Bulk quote request](#)

Availability	1-3 business days
Species Reactivity	Human
Format	Antigen affinity purified
Clonality	Polyclonal (rabbit origin)
Isotype	Rabbit Ig
Purity	Antigen affinity
UniProt	P50553
Applications	Western Blot : 1:1000
Limitations	This ASCL1 antibody is available for research use only.



ASCL1 antibody western blot analysis in NCI-H460 lysate. Observed molecular weight ~34 kDa.

Description

This gene encodes 'Achaete scute complex homolog like 1' (ASCL1) or 'Mammalian achaete scute complex homolog 1' (MASH1), a member of the basic helix-loop-helix (BHLH) family of transcription factors. The protein activates transcription by binding to the E box (5'-CANNTG-3'). Dimerization with other BHLH proteins is required for efficient DNA binding. This protein plays a role in the neuronal commitment and differentiation and in the generation of olfactory and autonomic neurons. Mutations in this gene may contribute to the congenital central hypoventilation syndrome (CCHS) phenotype in rare cases.

Application Notes

Titration of the ASCL1 antibody may be required due to differences in protocols and secondary/substrate sensitivity.

Immunogen

A portion of amino acids 63-90 from the human protein was used as the immunogen for this MASH1 / ASCL1 antibody.

Storage

Aliquot the ASCL1 antibody and store frozen at -20oC or colder. Avoid repeated freeze-thaw cycles.