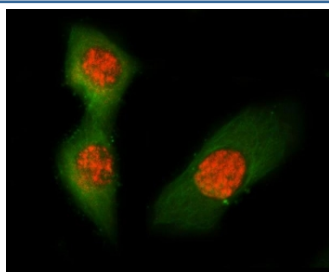


Asc Antibody / Pycard / Tms1 (RQ8006)

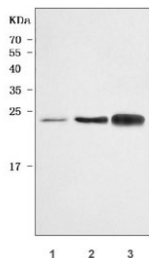
Catalog No.	Formulation	Size
RQ8006	0.5mg/ml if reconstituted with 0.2ml sterile DI water	100 ug

Bulk quote request

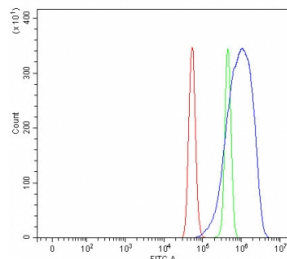
Availability	1-3 business days
Species Reactivity	Mouse
Format	Antigen affinity purified
Clonality	Polyclonal (rabbit origin)
Isotype	Rabbit IgG
Purity	Antigen affinity purified
Buffer	Lyophilized from 1X PBS with 2% Trehalose
UniProt	Q9EPB4
Localization	Cytoplasmic, nuclear
Applications	Western Blot : 0.5-1ug/ml Immunofluorescence : 5ug/ml Flow Cytometry : 1-3ug/million cells Direct ELISA : 0.1-0.5ug/ml
Limitations	This Asc antibody is available for research use only.



Immunofluorescent staining of FFPE mouse RM-1 cells with Asc antibody (red) and Alpha Tubulin mAb (green). HIER: steam section in pH6 citrate buffer for 20 min.



Western blot testing of mouse 1) lung, 2) spleen and 3) thymus tissue lysate with Asc antibody. Predicted molecular weight ~22 kDa.



Flow cytometry testing of fixed and permeabilized mouse RAW264.7 cells with Asc antibody at 1ug/million cells (blocked with goat sera); Red=cells alone, Green=isotype control, Blue= Asc antibody.

Description

PYCARD, often referred to as ASC (Apoptosis-associated speck-like protein containing a CARD), is a protein that in humans is encoded by the PYCARD gene. This gene encodes an adaptor protein that is composed of two protein-protein interaction domains: a N-terminal PYRIN-PAAD-DAPIN domain (PYD) and a C-terminal caspase-recruitment domain (CARD). The PYD and CARD domains are members of the six-helix bundle death domain-fold superfamily that mediates assembly of large signaling complexes in the inflammatory and apoptotic signaling pathways via the activation of caspase. In normal cells, this protein is localized to the cytoplasm; however, in cells undergoing apoptosis, it forms ball-like aggregates near the nuclear periphery. Two transcript variants encoding different isoforms have been found for this gene.

Application Notes

Optimal dilution of the Asc antibody should be determined by the researcher.

Immunogen

E. coli-derived recombinant mouse protein (amino acids K24-S193) was used as the immunogen for the Asc antibody.

Storage

After reconstitution, the Asc antibody can be stored for up to one month at 4oC. For long-term, aliquot and store at -20oC. Avoid repeated freezing and thawing.