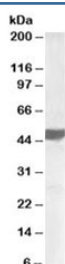


ASAM Antibody (R35155)

Catalog No.	Formulation	Size
R35155-100UG	0.5 mg/ml in 1X TBS, pH7.3, with 0.5% BSA (US sourced) and 0.02% sodium azide	100 ug

[Bulk quote request](#)

Availability	1-3 business days
Species Reactivity	Human
Format	Antigen affinity purified
Clonality	Polyclonal (goat origin)
Isotype	Goat Ig
Purity	Antigen affinity
Gene ID	79827
Applications	Western Blot : 0.5-2ug/ml ELISA (peptide) LOD : 1:32000
Limitations	This ASAM antibody is available for research use only.



Western blot testing of human placenta lysate with ASAM antibody at 0.5ug/ml.
Predicted molecular weight: ~41kDa but observed at ~48/44kDa (human/mouse).

Description

Additional name(s) for this target protein: Adipocyte specific adhesion molecule, CLMP

Application Notes

Optimal dilution of the ASAM antibody should be determined by the researcher.

Immunogen

Amino acids PSMIPSQSRAFQ were used as the immunogen for this ASAM antibody.

Storage

Aliquot and store the ASAM antibody at -20oC.