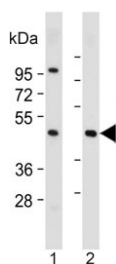


## ASAM Antibody / CLMP (F54663)

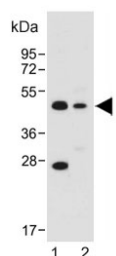
Catalog No.	Formulation	Size
F54663-0.4ML	In 1X PBS, pH 7.4, with 0.09% sodium azide	0.4 ml
F54663-0.08ML	In 1X PBS, pH 7.4, with 0.09% sodium azide	0.08 ml

**Bulk quote request**

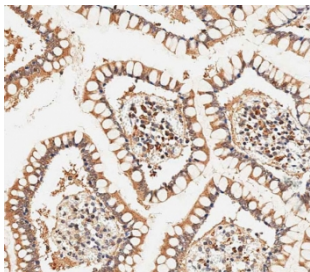
<b>Availability</b>	1-3 business days
<b>Species Reactivity</b>	Human, Mouse
<b>Format</b>	Purified
<b>Clonality</b>	Polyclonal (rabbit origin)
<b>Isotype</b>	Rabbit Ig
<b>Purity</b>	Antigen affinity purified
<b>UniProt</b>	Q9H6B4
<b>Applications</b>	Immunohistochemistry (FFPE) : 1:25 Western Blot : 1:500-1:2000
<b>Limitations</b>	This ASAM antibody is available for research use only.



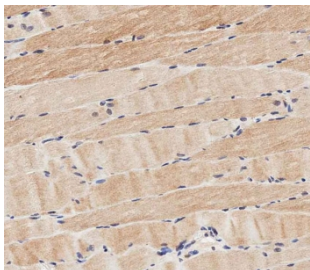
Western blot testing of human 1) HepG2 and 2) skeletal muscle lysate with ASAM antibody. Predicted molecular weight ~41 kDa.



Western blot testing of 1) human HepG2 and 2) mouse brain lysate with ASAM antibody. Predicted molecular weight ~41 kDa.



IHC testing of FFPE human small intestine tissue with ASAM antibody. HIER: steam section in pH9 EDTA for 20 min and allow to cool prior to staining.



IHC testing of FFPE human skeletal muscle tissue with ASAM antibody. HIER: steam section in pH9 EDTA for 20 min and allow to cool prior to staining.

## Description

The CTX family of proteins, including ASAM, are type I transmembrane proteins within the Ig superfamily that localize to junctional complexes between endothelial and epithelial cells and may play a role in cell-cell adhesion.[OMIM].

## Application Notes

The stated application concentrations are suggested starting points. Titration of the ASAM antibody may be required due to differences in protocols and secondary/substrate sensitivity.

## Immunogen

A portion of amino acids 81-110 from the human protein was used as the immunogen for the ASAM antibody.

## Storage

Aliquot the ASAM antibody and store frozen at -20oC or colder. Avoid repeated freeze-thaw cycles.