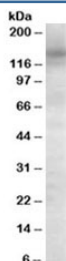


AS160 Antibody (R33399)

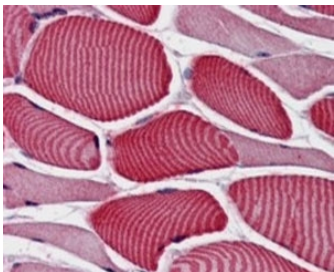
Catalog No.	Formulation	Size
R33399-100UG	0.5 mg/ml in 1X TBS, pH7.3, with 0.5% BSA (US sourced) and 0.02% sodium azide	100 ug

[Bulk quote request](#)

Availability	1-3 business days
Species Reactivity	Human
Predicted Reactivity	Dog
Format	Antigen affinity purified
Host	Goat
Clonality	Polyclonal (goat origin)
Isotype	Goat Ig
Purity	Antigen affinity
Gene ID	9882
Applications	Western Blot : 0.1-0.3ug/ml Immunohistochemistry (FFPE) : 3-5ug/ml ELISA (peptide) LOD : 1:128000
Limitations	This AS160 antibody is available for research use only.



Western blot testing of Daudi cell lysate with AS160 antibody at 0.1ug/ml. Predicted molecular weight ~147 kDa but routinely observed at 147-160 kDa.



IHC staining of FFPE human skeletal muscle with AS160 antibody at 4ug/ml. HIER: steamed with pH6 citrate buffer, AP-staining.

Description

Additional name(s) for this target protein: TBC1 domain family, member 4; TBC1D4

Application Notes

Optimal dilution of the AS160 antibody should be determined by the researcher.

Immunogen

Amino acids DDPEKIEERKKSK were used as the immunogen for this AS160 antibody.

Storage

Aliquot and store the AS160 antibody at -20oC.