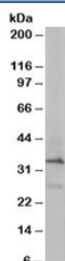


ARPC2 Antibody (R33883)

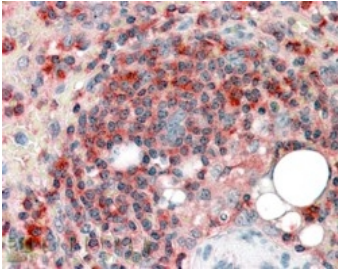
Catalog No.	Formulation	Size
R33883-100UG	0.5 mg/ml in 1X TBS, pH7.3, with 0.5% BSA (US sourced) and 0.02% sodium azide	100 ug

[Bulk quote request](#)

Availability	1-3 business days
Species Reactivity	Human
Predicted Reactivity	Cow, Dog, Mouse, Rat
Format	Antigen affinity purified
Host	Goat
Clonality	Polyclonal (goat origin)
Isotype	Goat Ig
Purity	Antigen affinity
Gene ID	10109
Applications	Western Blot : 0.1-0.5ug/ml Immunohistochemistry (FFPE) : 3-5ug/ml ELISA (peptide) LOD : 1:32000
Limitations	This ARPC2 antibody is available for research use only.



Western blot testing of HeLa lysate with ARPC2 antibody at 0.2ug/ml. Predicted molecular weight: ~34kDa.



IHC staining of FFPE human spleen with ARPC2 antibody at 4ug/ml. HIER: steamed with pH6 citrate buffer, AP-staining.

Description

Additional name(s) for this target protein: Actin related protein 2/3 complex, subunit 2

Application Notes

Optimal dilution of the ARPC2 antibody should be determined by the researcher.

Immunogen

Amino acids EMKTITGKTFSSR were used as the immunogen for this ARPC2 antibody.

Storage

Aliquot and store the ARPC2 antibody at -20oC.