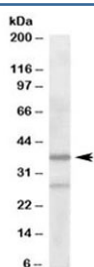


ARPC1B Antibody / Actin-related protein 2/3 complex subunit 1B (R33197)

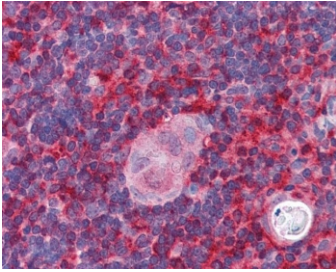
| Catalog No. | Formulation | Size |
|--------------|---|--------|
| R33197-100UG | 0.5 mg/ml in 1X TBS, pH7.3, with 0.5% BSA (US sourced) and 0.02% sodium azide | 100 ug |

[Bulk quote request](#)

| | |
|----------------------|---|
| Availability | 1-3 business days |
| Species Reactivity | Human |
| Predicted Reactivity | Mouse, Rat, Dog, Pig, Cow |
| Format | Antigen affinity purified |
| Host | Goat |
| Clonality | Polyclonal (goat origin) |
| Isotype | Goat Ig |
| Purity | Antigen affinity |
| Gene ID | 10095 |
| Localization | Cytoplasmic |
| Applications | Western Blot : 2-4ug/ml IHC (FFPE) : 5ug/ml ELISA (peptide) LOD : 1:32000 |
| Limitations | This ARPC1B antibody is available for research use only. |



Western blot testing of human liver lysate with ARPC1B antibody at 2ug/ml. Predicted molecular weight: ~41 kDa.



IHC testing of FFPE human thymus tissue with ARPC1B antibody at 5ug/ml. Required HIER: steamed antigen retrieval with pH6 citrate buffer; AP-staining.

Description

Additional name(s) for this target protein: Actin related protein 2/3 complex, subunit 1B

Application Notes

Optimal dilution of the ARPC1B antibody should be determined by the researcher.

Immunogen

Amino acids AYHSFLVEPISCH were used as the immunogen for this ARPC1B antibody.

Storage

Aliquot and store the ARPC1B antibody at -20oC.