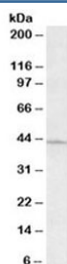


ARPC1A Antibody (R33440)

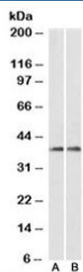
Catalog No.	Formulation	Size
R33440-100UG	0.5 mg/ml in 1X TBS, pH7.3, with 0.5% BSA (US sourced) and 0.02% sodium azide	100 ug

[Bulk quote request](#)

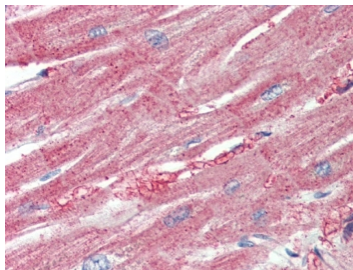
Availability	1-3 business days
Species Reactivity	Human, Mouse, Rat
Predicted Reactivity	Pig, Cow
Format	Antigen affinity purified
Host	Goat
Clonality	Polyclonal (goat origin)
Isotype	Goat Ig
Purity	Antigen affinity
Gene ID	10552
Localization	Cytoplasmic, membranous
Applications	Western Blot : 0.3-1ug/ml IHC (FFPE) : 5ug/ml ELISA (peptide) LOD : 1:64000
Limitations	This ARPC1A antibody is available for research use only.



Western blot testing of HeLa lysate with ARPC1A antibody at 0.3ug/ml. Predicted molecular weight: ~42/39 kDa (isoform 1/2).



Western blot testing of fetal mouse brain (A) and adult rat brain (B) lysates with ARPC1A antibody at 0.1ug/ml. Predicted molecular weight: ~42/39 kDa (isoform 1/2).



IHC testing of FFPE human heart tissue with ARPC1A antibody at 5ug/ml. Required HIER: steamed antigen retrieval with pH6 citrate buffer; AP-staining.

Description

Additional name(s) for this target protein: Actin related protein 2/3 complex, subunit 1A

Application Notes

Optimal dilution of the ARPC1A antibody should be determined by the researcher.

Immunogen

Amino acids DFKTLESSIQGLR were used as the immunogen for this ARPC1A antibody.

Storage

Aliquot and store the ARPC1A antibody at -20oC.