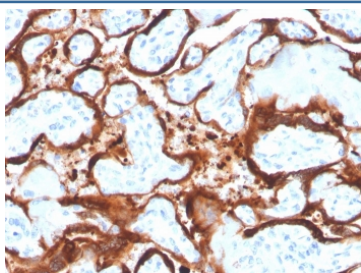


## Aromatase Antibody / CYP19A1 [clone CYP19A1/4257] (V8665)

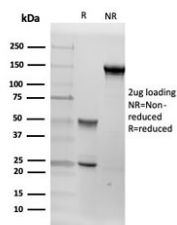
Catalog No.	Formulation	Size
V8665-100UG	0.2 mg/ml in 1X PBS with 0.1 mg/ml BSA (US sourced) and 0.05% sodium azide	100 ug
V8665-20UG	0.2 mg/ml in 1X PBS with 0.1 mg/ml BSA (US sourced) and 0.05% sodium azide	20 ug
V8665SAF-100UG	1 mg/ml in 1X PBS; BSA free, sodium azide free	100 ug

**Bulk quote request**

<b>Availability</b>	1-3 business days
<b>Species Reactivity</b>	Human
<b>Format</b>	Purified
<b>Clonality</b>	Monoclonal (mouse origin)
<b>Isotype</b>	Mouse IgG2a
<b>Clone Name</b>	CYP19A1/4257
<b>Purity</b>	Protein G affinity chromatography
<b>UniProt</b>	O14793
<b>Localization</b>	Membrane
<b>Applications</b>	ELISA : order Ab without BSA for coating Western Blot : 1-2ug/ml Immunohistochemistry (FFPE) : 1-2ug/ml for 30 minutes at RT
<b>Limitations</b>	This Aromatase antibody is available for research use only.



IHC staining of FFPE human placenta with Aromatase antibody (clone CYP19A1/4257).  
HIER: boil tissue sections in pH 9 10mM Tris with 1mM EDTA for 20 min and allow to cool before testing.



SDS-PAGE analysis of purified, BSA-free Aromatase antibody (clone CYP19A1/4257) as confirmation of integrity and purity.

## Description

CYP450 Aromatase is part of the CYP19A1 family involved in the aromatization of androgens to estrogens, a highly conserved mechanism amongst mammals. Clone CYP19A1/4257 recognizes a conserved epitope on the CYP450 aromatase, allowing for detection of aromatase levels using various analysis methods.

## Application Notes

Optimal dilution of the Aromatase antibody should be determined by the researcher.

## Immunogen

Amino acids KALEDDVIGYPVKK were used as the immunogen for the Aromatase antibody.

## Storage

Store the Aromatase antibody at 2-8oC (with azide) or aliquot and store at -20oC or colder (without azide).