

ARL8A Antibody (F54537)

| Catalog No. | Formulation | Size |
|---------------|--|---------|
| F54537-0.4ML | In 1X PBS, pH 7.4, with 0.09% sodium azide | 0.4 ml |
| F54537-0.08ML | In 1X PBS, pH 7.4, with 0.09% sodium azide | 0.08 ml |

[Bulk quote request](#)

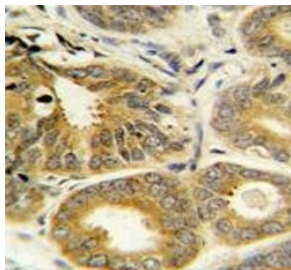
| | |
|---------------------------|--|
| Availability | 1-3 business days |
| Species Reactivity | Human, Mouse |
| Format | Purified |
| Clonality | Polyclonal (rabbit origin) |
| Isotype | Rabbit Ig |
| Purity | Antigen affinity purified |
| UniProt | Q96BM9 |
| Applications | Flow Cytometry : 1:25 (1x10 ⁶ cells) Immunohistochemistry (FFPE) : 1:25 Western Blot : 1:500-1:2000 |
| Limitations | This ARL8A antibody is available for research use only. |



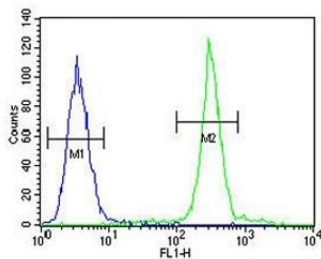
Western blot testing of mouse NIH 3T3 cell lysate with ARL8A antibody. Predicted molecular weight ~21 kDa.



Western blot testing of human A375 cell lysate with ARL8A antibody. Predicted molecular weight ~21 kDa.



IHC testing of FFPE human prostate carcinoma tissue with ARL8A antibody. HIER: steam section in pH6 citrate buffer for 20 min and allow to cool prior to staining.



Flow cytometry testing of human A375 cells with ARL8A antibody; Blue=isotype control, Green= ARL8A antibody.

Description

ARL8A plays a role in lysosome motility. [UniProt]

Application Notes

The stated application concentrations are suggested starting points. Titration of the ARL8A antibody may be required due to differences in protocols and secondary/substrate sensitivity.

Immunogen

A portion of amino acids 116-142 from the human protein was used as the immunogen for the ARL8A antibody.

Storage

Aliquot the ARL8A antibody and store frozen at -20oC or colder. Avoid repeated freeze-thaw cycles.