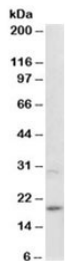


ARL2 Antibody (R34710)

Catalog No.	Formulation	Size
R34710-100UG	0.5 mg/ml in 1X TBS, pH7.3, with 0.5% BSA (US sourced) and 0.02% sodium azide	100 ug

[Bulk quote request](#)

Availability	1-3 business days
Species Reactivity	Human
Predicted Reactivity	Dog
Format	Antigen affinity purified
Host	Goat
Clonality	Polyclonal (goat origin)
Isotype	Goat Ig
Purity	Antigen affinity
Gene ID	402
Applications	Western Blot : 1-3ug/ml ELISA (peptide) LOD : 1:1000
Limitations	This ARL2 antibody is available for research use only.



Western blot testing of U937 lysate with ARL2 antibody at 2ug/ml. Predicted molecular weight: ~20kDa.

Description

Additional name(s) for this target protein: ADP-ribosylation factor-like 2, ARFL2

Application Notes

Optimal dilution of the ARL2 antibody should be determined by the researcher.

Immunogen

Amino acids LDDISSRIFTAD were used as the immunogen for this ARL2 antibody.

Storage

Aliquot and store the ARL2 antibody at -20oC.