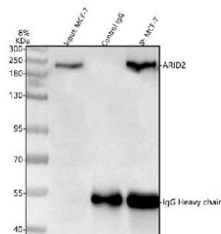


## ARID2 Antibody / AT-rich interactive domain-containing protein 2 (RQ4971)

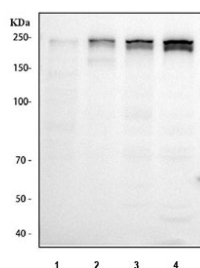
Catalog No.	Formulation	Size
RQ4971	0.5mg/ml if reconstituted with 0.2ml sterile DI water	100 ug

[Bulk quote request](#)

<b>Availability</b>	1-3 business days
<b>Species Reactivity</b>	Human
<b>Format</b>	Antigen affinity purified
<b>Host</b>	Rabbit
<b>Clonality</b>	Polyclonal (rabbit origin)
<b>Isotype</b>	Rabbit IgG
<b>Purity</b>	Affinity purified
<b>Buffer</b>	Lyophilized from 1X PBS with 2% Trehalose
<b>UniProt</b>	Q68CP9
<b>Applications</b>	Western Blot : 0.5-1ug/ml Immunoprecipitation : 2ug/500ug of lysate
<b>Limitations</b>	This ARID2 antibody is available for research use only.



Immunoprecipitation of ARID2 protein from 500ug of human MCF7 whole cell lysate with 2ug of ARID2 antibody.



Western blot testing of human 1) ThP-1, 2) Jurkat, 3) HEL and 4) MCF7 cell lysate with ARID2 antibody. Predicted molecular weight: 191/197 kDa (two isoforms).

## Description

AT-rich interactive domain-containing protein 2 (ARID2) is a protein that in humans is encoded by the ARID2 gene. It is mapped to 12q12. This gene encodes a member of the AT-rich interactive domain (ARID)-containing family of DNA-binding proteins. Members of the ARID family have roles in embryonic patterning, cell lineage gene regulation, cell cycle control, transcriptional regulation and chromatin structure modification. This protein functions as a subunit of the polybromo- and BRG1-associated factor or PBAF (SWI/SNF-B) chromatin remodeling complex which facilitates ligand-dependent transcriptional activation by nuclear receptors. Mutations in this gene are associated with hepatocellular carcinomas. A pseudogene of this gene is found on chromosome1.

## Application Notes

Optimal dilution of the ARID2 antibody should be determined by the researcher.

## Immunogen

Amino acids DERRKGLAFLDELRFHHSR from the human protein were used as the immunogen for the ARID2 antibody.

## Storage

Store the ARID2 antibody at -20oC.