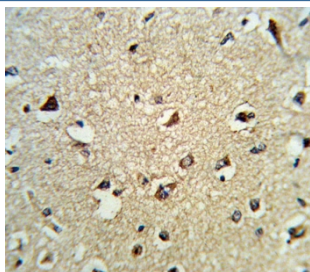


ARHGDIA Antibody / RHOGDI (F54788)

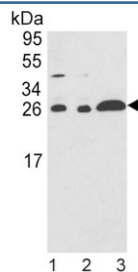
Catalog No.	Formulation	Size
F54788-0.4ML	In 1X PBS, pH 7.4, with 0.09% sodium azide	0.4 ml
F54788-0.08ML	In 1X PBS, pH 7.4, with 0.09% sodium azide	0.08 ml

[Bulk quote request](#)

Availability	1-3 business days
Species Reactivity	Human
Format	Purified
Host	Rabbit
Clonality	Polyclonal (rabbit origin)
Isotype	Rabbit Ig
Purity	Purified
UniProt	P52565
Localization	Cytoplasmic
Applications	Flow Cytometry : 1:25 (1x10 ⁶ cells) Immunohistochemistry (FFPE) : 1:25 Western Blot : 1:500-1:1000
Limitations	This ARHGDIA antibody is available for research use only.



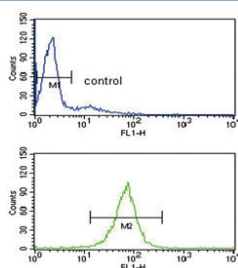
IHC testing of FFPE human brain tissue with ARHGDIA antibody. HIER: steam section in pH6 citrate buffer for 20 min and allow to cool prior to staining.



Western blot testing of human 1) A375, 2) HL60 and 3) Ramos cell lysate with ARHGDIA antibody. Expected molecular weight: 23-29 kDa.



Western blot testing of 1) non-transfected and 2) transfected 293 cell lysate with ARHGDIA antibody.



Flow cytometry testing of human HL60 cells with ARHGDIA antibody; Blue=isotype control, Green= ARHGDIA antibody.

Description

ARHGDIA regulates the GDP/GTP exchange reaction of the Rho proteins by inhibiting the dissociation of GDP from them, and the subsequent binding of GTP to them.

Application Notes

The stated application concentrations are suggested starting points. Titration of the ARHGDIA antibody may be required due to differences in protocols and secondary/substrate sensitivity.

Immunogen

A portion of amino acids 112-140 from the human protein was used as the immunogen for the ARHGDIA antibody.

Storage

Aliquot the ARHGDIA antibody and store frozen at -20°C or colder. Avoid repeated freeze-thaw cycles.