

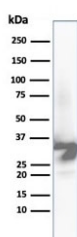
Arginase 1 Antibody [clone ARG1/6790R] (V8793)

Catalog No.	Formulation	Size
V8793-100UG	0.2 mg/ml in 1X PBS with 0.1 mg/ml BSA (US sourced), 0.05% sodium azide	100 ug
V8793-20UG	0.2 mg/ml in 1X PBS with 0.1 mg/ml BSA (US sourced), 0.05% sodium azide	20 ug
V8793SAF-100UG	1 mg/ml in 1X PBS; BSA free, sodium azide free	100 ug

Recombinant **RABBIT MONOCLONAL**

[Bulk quote request](#)

Availability	1-3 business days
Species Reactivity	Human
Format	Purified
Clonality	Recombinant Rabbit Monoclonal
Isotype	Rabbit IgG
Clone Name	ARG1/6790R
Purity	Protein A/G affinity
UniProt	P05089
Localization	Cytoplasmic
Applications	Western Blot : 1-2ug/ml
Limitations	This Arginase 1 antibody is available for research use only.



Western blot analysis of human liver tissue lysate using Arginase 1 antibody (clone ARG1/6790R). Predicted molecular weight ~35 kDa.

Description

Recognizes a protein of 35-38kDa, which is identified as Arginase 1 (ARG1). Arginase is a manganese metallo-enzyme that catalyzes the hydrolysis of arginine to generate ornithine and urea. Arginase I and II are isoenzymes which differ in subcellular localization, regulation, and possibly function. Arginase I is a cytosolic enzyme, which is expressed mainly in the liver as part of the urea cycle, whereas arginase II is a mitochondrial protein found in a variety of tissues. Antibody to

ARG-1 labels hepatocytes in normal tissues and granulocytes in peripheral blood. ARG-1 is a sensitive and specific marker for identification of hepatocellular carcinoma.

Application Notes

Optimal dilution of the Arginase 1 antibody should be determined by the researcher.

Immunogen

A portion of amino acids 300-400 was used as the immunogen for the Arginase 1 antibody.

Storage

Aliquot the Arginase 1 antibody and store frozen at -20oC or colder. Avoid repeated freeze-thaw cycles.