

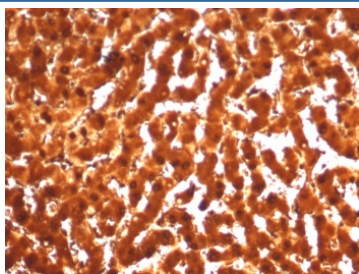
ARG1 Antibody / Arginase 1 [clone ARG1/7514R] (V5183)

Catalog No.	Formulation	Size
V5183-100UG	0.2 mg/ml in 1X PBS with 0.1 mg/ml BSA (US sourced), 0.05% sodium azide	100 ug
V5183-20UG	0.2 mg/ml in 1X PBS with 0.1 mg/ml BSA (US sourced), 0.05% sodium azide	20 ug
V5183SAF-100UG	1 mg/ml in 1X PBS; BSA free, sodium azide free	100 ug

Recombinant **RABBIT MONOCLONAL**

[Bulk quote request](#)

Availability	1-3 business days
Species Reactivity	Human
Format	Purified
Host	Rabbit
Clonality	Recombinant Rabbit Monoclonal
Isotype	Rabbit IgG, kappa
Clone Name	ARG1/7514R
Purity	Protein A/G affinity
UniProt	P05089
Localization	Cytoplasm
Applications	Immunohistochemistry (FFPE) : 1-2ug/ml for 30 min at RT
Limitations	This ARG1 antibody is available for research use only.



IHC staining of FFPE human liver tissue with ARG1 antibody (clone ARG1/7514R).
HIER: boil tissue sections in pH 9 10mM Tris with 1mM EDTA for 20 min and allow to cool before testing.

Description

Recognizes a protein of 35-38kDa, which is identified as Arginase 1 (ARG1). Arginase is a manganese metallo-enzyme that catalyzes the hydrolysis of arginine to generate ornithine and urea. Arginase I and II are isoenzymes which differ in

subcellular localization, regulation, and possibly function. Arginase I is a cytosolic enzyme, which is expressed mainly in the liver as part of the urea cycle, whereas arginase II is a mitochondrial protein found in a variety of tissues. Antibody to ARG-1 labels hepatocytes in normal tissues and granulocytes in peripheral blood. ARG-1 is a sensitive and specific marker for identification of hepatocellular carcinoma.

Application Notes

Optimal dilution of the ARG1 antibody should be determined by the researcher.

Immunogen

A recombinant human protein fragment (within amino acids 300-400) was used as the immunogen for the ARG1 antibody.

Storage

Aliquot the ARG1 antibody and store frozen at -20oC or colder. Avoid repeated freeze-thaw cycles.