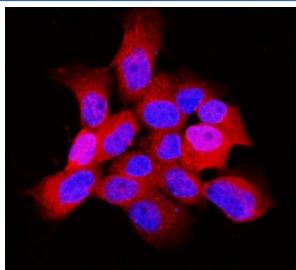


ARF6 Antibody / ADP-ribosylation factor 6 (R32472)

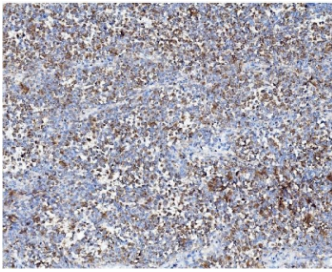
Catalog No.	Formulation	Size
R32472	0.5mg/ml if reconstituted with 0.2ml sterile DI water	100 ug

Bulk quote request

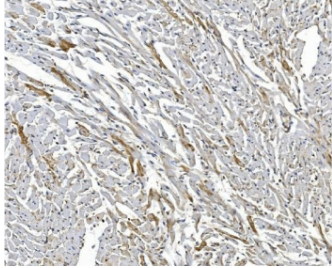
Availability	1-3 business days
Species Reactivity	Human, Mouse, Rat
Format	Antigen affinity purified
Clonality	Polyclonal (rabbit origin)
Isotype	Rabbit IgG
Purity	Antigen affinity
Buffer	Lyophilized from 1X PBS with 2.5% BSA and 0.025% sodium azide
UniProt	P62330
Localization	Cytoplasmic, cell membrane
Applications	Western Blot : 0.5-1ug/ml Flow Cytometry : 1-3ug/10 ⁶ cells Immunohistochemistry (FFPE) : 1-2ug/ml Immunofluorescence : 2-4ug/ml
Limitations	This ARF6 antibody is available for research use only.



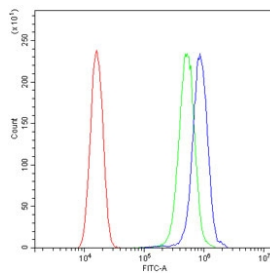
Immunofluorescent staining of FFPE human A431 cells with ARF6 antibody (red) and DAPI nuclear stain (blue). HIER: steam section in pH6 citrate buffer for 20 min.



IHC staining of FFPE human melanoma with ARF6 antibody. HIER: boil tissue sections in pH8 EDTA for 20 min and allow to cool before testing.



IHC staining of FFPE rat heart with ARF6 antibody. HIER: boil tissue sections in pH8 EDTA for 20 min and allow to cool before testing.



Flow cytometry testing of human SiHa cells with ARF6 antibody at 1ug/10⁶ cells (blocked with goat sera); Red=cells alone, Green=isotype control, Blue= ARF6 antibody.



Western blot testing of 1) rat kidney, 2) mouse kidney and 3) human MCF7 lysate with ARF6 antibody at 0.5ug/ml. Predicted molecular weight ~20 kDa.

Description

ADP-ribosylation factor 6 (ARF6) is a member of the human ARF gene family, which is part of the RAS superfamily. The ARF genes encode small guanine nucleotide-binding proteins that stimulate the ADP-ribosyltransferase activity of cholera toxin and play a role in vesicular trafficking and as activators of phospholipase D. The product of this gene is localized to the plasma membrane, and regulates vesicular trafficking, remodelling of membrane lipids, and signaling pathways that lead to actin remodeling. A pseudogene of this gene is located on chromosome 7.

Application Notes

Optimal dilution of the ARF6 antibody should be determined by the researcher.

Immunogen

Amino acids G2-S175 of the human protein were used as the immunogen for the ARF6 antibody.

Storage

Prior to reconstitution, store at 4°C. After reconstitution, the ARF6 antibody can be stored for up to one month at 4°C. For long-term, aliquot and store at -20°C. Avoid repeated freezing and thawing.

