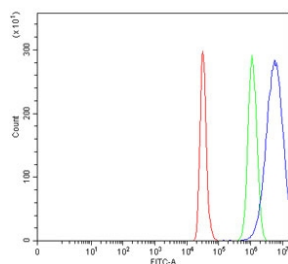


AREG Antibody / Amphiregulin (RQ7312)

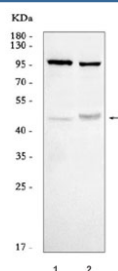
Catalog No.	Formulation	Size
RQ7312	0.5mg/ml if reconstituted with 0.2ml sterile DI water	100 ug

Bulk quote request

Availability	1-3 business days
Species Reactivity	Human
Format	Antigen affinity purified
Clonality	Polyclonal (rabbit origin)
Isotype	Rabbit IgG
Purity	Antigen affinity purified
Buffer	Lyophilized from 1X PBS with 2% Trehalose
UniProt	P15514
Applications	Western Blot : 0.5-1ug/ml Flow Cytometry : 1-3ug/million cells Direct ELISA : 0.1-0.5ug/ml
Limitations	This AREG antibody is available for research use only.



Flow cytometry testing of human Caco-2 cells with AREG antibody at 1ug/million cells (blocked with goat sera); Red=cells alone, Green=isotype control, Blue= AREG antibody.



Western blot testing of human 1) A549 and 2) MCF7 cell lysate with AREG antibody. Molecular weight: 28 kDa (non-glycosylated), ~50 kDa (glycosylated pro form), ~43 kDa (predominant glycosylated soluble form) as well as other, smaller, soluble and membrane bound forms.

Description

Amphiregulin, also known as AREG, is a protein that in humans is encoded by the AREG gene. The protein encoded by this gene is a member of the epidermal growth factor (EGF) family. It is an autocrine growth factor as well as a mitogen for astrocytes, Schwann cells, fibroblasts. It is related to epidermal growth factor (EGF) and transforming growth factor alpha (TGF-alpha). This protein interacts with the Epidermal growth factor receptor (EGFR) to promote the growth of normal epithelial cells. It is mapped to 9q32. It has been shown to play a role in immunity, inflammation, tissue repair, and lung and mammary gland development. Homozygous knockout mice for this gene exhibit impaired immune system regulation in the skin and gene expression changes characteristic of chronic liver damage.

Application Notes

Optimal dilution of the AREG antibody should be determined by the researcher.

Immunogen

Recombinant human protein (amino acids S101-R180) was used as the immunogen for the AREG antibody.

Storage

After reconstitution, the AREG antibody can be stored for up to one month at 4oC. For long-term, aliquot and store at -20oC. Avoid repeated freezing and thawing.