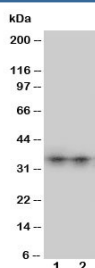


## Aquaporin 8 Antibody (R30584)

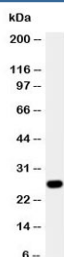
Catalog No.	Formulation	Size
R30584	0.5mg/ml if reconstituted with 0.2ml sterile DI water	100 ug

**Bulk quote request**

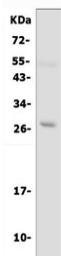
<b>Availability</b>	1-3 business days
<b>Species Reactivity</b>	Human
<b>Format</b>	Antigen affinity purified
<b>Clonality</b>	Polyclonal (rabbit origin)
<b>Isotype</b>	Rabbit IgG
<b>Purity</b>	Antigen affinity
<b>Buffer</b>	Lyophilized from 1X PBS with 2% Trehalose and 0.025% sodium azide
<b>UniProt</b>	O94778
<b>Applications</b>	Western Blot : 0.5-1ug/ml
<b>Limitations</b>	This Aquaporin 8 antibody is available for research use only.



Western blot testing of Aquaporin 8 antibody and Lane 1: SW620; 2: COLO320 cell lysate. The ~27 kDa protein may be visualized at higher molecular weights due to glycosylation.



Western blot testing of Aquaporin 8 antibody and A431 cell lysate. The ~27 kDa protein may be visualized at higher molecular weights due to glycosylation.



Western blot testing of Aquaporin 8 antibody and human PC-3 cell lysate. The ~27 kDa protein may be visualized at higher molecular weights due to glycosylation.

## Description

Aquaporin-8 is encoded by the AQP8 gene and is a water channel protein. Aquaporins are a family of small integral membrane proteins related to the major intrinsic protein (MIP or AQP0). Aquaporin 8 mRNA is found predominantly in pancreas and colon. The AQP8 gene contains 6 exons. It is mapped to chromosome 16p12.

## Application Notes

The stated application concentrations are suggested starting amounts. Titration of the Aquaporin 8 antibody may be required due to differences in protocols and secondary/substrate sensitivity.

## Immunogen

An amino acid sequence from the N-terminus of human Aquaporin 8 (MSGEIAMCEPEFGNDKARE) was used as the immunogen for this Aquaporin 8 antibody.

## Storage

After reconstitution, the Aquaporin 8 antibody can be stored for up to one month at 4°C. For long-term, aliquot and store at -20°C. Avoid repeated freezing and thawing.