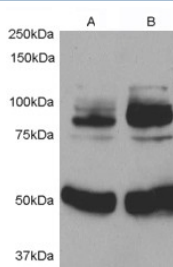


## APPL1 Antibody (R34912)

Catalog No.	Formulation	Size
R34912-100UG	0.5 mg/ml in 1X TBS, pH7.3, with 0.5% BSA (US sourced) and 0.02% sodium azide	100 ug

[Bulk quote request](#)

Availability	1-3 business days
Species Reactivity	Human, Mouse, Rat
Predicted Reactivity	Cow, Dog
Format	Antigen affinity purified
Clonality	Polyclonal (goat origin)
Isotype	Goat Ig
Purity	Antigen affinity
Gene ID	26060
Applications	Western Blot : 0.5-1.5ug/ml ELISA (peptide) LOD : 1:64000
Limitations	This APPL1 antibody is available for research use only.



Western blot testing of rat aortic smooth muscle cells before (1) and after (2) infection with human APPL1 adenovirus for 48hrs. APPL1 antibody was used at 0.5ug/ml. The expected ~80kDa response is significantly stronger in the infected sample.

## Description

Additional name(s) for this target protein: Adaptor protein containing pH domain PTB domain and leucine zipper motif

## Application Notes

Optimal dilution of the APPL1 antibody should be determined by the researcher.

## Immunogen

Amino acids NRYSRLSKKRENDK were used as the immunogen for this APPL1 antibody.

## **Storage**

Aliquot and store the APPL1 antibody at -20oC.