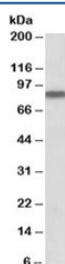


APPL Antibody (R33528)

Catalog No.	Formulation	Size
R33528-100UG	0.5 mg/ml in 1X TBS, pH7.3, with 0.5% BSA (US sourced) and 0.02% sodium azide	100 ug

[Bulk quote request](#)

Availability	1-3 business days
Species Reactivity	Human
Format	Antigen affinity purified
Host	Goat
Clonality	Polyclonal (goat origin)
Isotype	Goat Ig
Purity	Antigen affinity
Gene ID	26060
Applications	Western Blot : 0.3-1ug/ml ELISA (peptide) LOD : 1:2000
Limitations	This APPL antibody is available for research use only.



Western blot testing of human heart lysate with APPL antibody at 0.3ug/ml. Predicted molecular weight: ~80kDa.

Description

Additional name(s) for this target protein: Adaptor protein containing pH domain, PTB domain and leucine zipper motif; APPL1

Application Notes

Optimal dilution of the APPL antibody should be determined by the researcher.

Immunogen

Amino acids DLGEGGKKRESEA were used as the immunogen for this APPL antibody.

Storage

Aliquot and store the APPL antibody at -20oC.