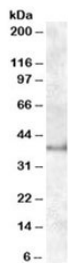


Apolipoprotein L6 Antibody (R35423)

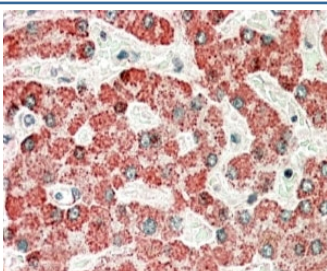
Catalog No.	Formulation	Size
R35423-100UG	0.5 mg/ml in 1X TBS, pH7.3, with 0.5% BSA (US sourced) and 0.02% sodium azide	100 ug

[Bulk quote request](#)

Availability	1-3 business days
Species Reactivity	Human
Format	Antigen affinity purified
Host	Goat
Clonality	Polyclonal (goat origin)
Isotype	Goat Ig
Purity	Antigen affinity
Gene ID	80830
Applications	Western Blot : 1-3ug/ml Immunohistochemistry (FFPE) : 5-10ug/ml ELISA (peptide) LOD : 1:8000
Limitations	This Apolipoprotein L6 antibody is available for research use only.



Western blot testing of human kidney lysate with Apolipoprotein L6 antibody at 1ug/ml.
Predicted molecular weight: ~38kDa.



IHC staining of FFPE human liver with Apolipoprotein L6 antibody at 5ug/ml. HIER: microwaved with pH9 Tris/EDTA buffer, HRP-staining.

Description

Additional name(s) for this target protein: APOL-VI; APOL6

Application Notes

Optimal dilution of the Apolipoprotein L6 antibody should be determined by the researcher.

Immunogen

Amino acids QRDEDDAPLCEDE were used as the immunogen for this Apolipoprotein L6 antibody.

Storage

Aliquot and store the Apolipoprotein L6 antibody at -20°C.