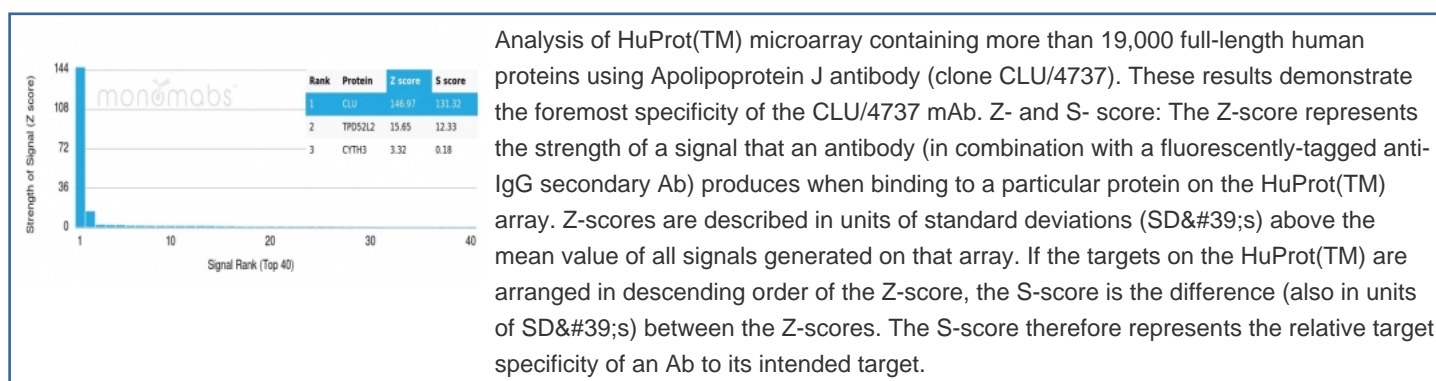


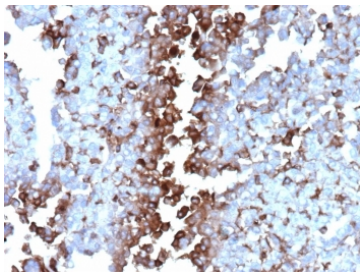
## Apolipoprotein J Antibody / APO-J / Clusterin [clone CLU/4737] (V5663)

Catalog No.	Formulation	Size
V5663-100UG	0.2 mg/ml in 1X PBS with 0.1 mg/ml BSA (US sourced), 0.05% sodium azide	100 ug
V5663-20UG	0.2 mg/ml in 1X PBS with 0.1 mg/ml BSA (US sourced), 0.05% sodium azide	20 ug
V5663SAF-100UG	1 mg/ml in 1X PBS; BSA free, sodium azide free	100 ug

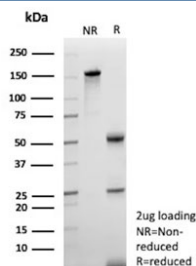
[Bulk quote request](#)

<b>Availability</b>	1-3 business days
<b>Species Reactivity</b>	Human
<b>Format</b>	Purified
<b>Clonality</b>	Monoclonal (mouse origin)
<b>Isotype</b>	Mouse IgG2, kappa
<b>Clone Name</b>	CLU/4737
<b>Purity</b>	Protein G affinity
<b>UniProt</b>	P10909
<b>Localization</b>	Cytoplasm, Secreted
<b>Applications</b>	Immunohistochemistry (FFPE) : 1-2ug/ml
<b>Limitations</b>	This Apolipoprotein J antibody is available for research use only.





IHC staining of FFPE human adrenal gland tissue with Apolipoprotein J antibody (clone CLU/4737). Inset: PBS used in place of primary Ab (secondary Ab negative control).  
HIER: boil tissue sections in pH 9 10mM Tris with 1mM EDTA for 20 min and allow to cool before testing.



SDS-PAGE analysis of purified, BSA-free Apolipoprotein J antibody (clone CLU/4737) as confirmation of integrity and purity.

## Description

Clusterin, also designated complement lysis inhibitor (CLI), apolipoprotein J (APOJ), sulfated glycoprotein 2 (SGP2), SP40 and testosterone-repressed prostate message 2 (TRPM2), is a secretory, heterodimeric glycoprotein that influences immune regulation, cell adhesion, transformation, lipid transportation, tissue remodeling, membrane recycling and cell-cell interactions. Clusterin is synthesized as a 449 amino acid polypeptide that is post-translationally cleaved at an internal bond between Arg 227 and Ser 228. Two subunits,  $\alpha^{1/4}$  and  $\alpha^{3/4}$ , are associated through disulfide bonds. The  $\alpha^{3/4}$  subunit (also called ApoJ $\alpha^{3/4}$ ) corresponds to residues 23-227. The  $\alpha^{1/4}$  subunit (also called ApoJ $\alpha^{1/4}$ ) corresponds to residues 228-449. Overexpression of Clusterin appears to be more common in late stages of mammary tumor progression. Clusterin markedly influences  $\alpha^{3/4}$ -Amyloid structure and neuritic toxicity in vivo and may influence Alzheimer's pathogenesis.

## Application Notes

Optimal dilution of the Apolipoprotein J antibody should be determined by the researcher.

## Immunogen

A portion of amino acids 150-300 from human Clusterin protein was used as the immunogen for the Apolipoprotein J antibody.

## Storage

Aliquot the Apolipoprotein J antibody and store frozen at -20°C or colder. Avoid repeated freeze-thaw cycles.