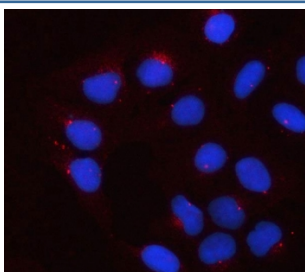


Apolipoprotein E Antibody / APOE (RQ8075)

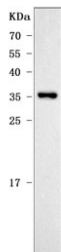
Catalog No.	Formulation	Size
RQ8075	0.5mg/ml if reconstituted with 0.2ml sterile DI water	100 ug

Bulk quote request

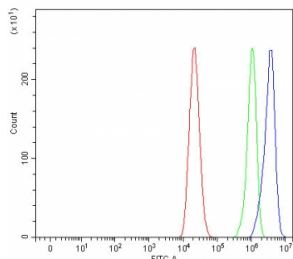
Availability	1-3 business days
Species Reactivity	Human
Format	Antigen affinity purified
Clonality	Polyclonal (rabbit origin)
Isotype	Rabbit IgG
Purity	Antigen affinity purified
Buffer	Lyophilized from 1X PBS with 2% Trehalose
UniProt	P02649
Localization	Cytoplasmic, membranous
Applications	Western Blot : 0.5-1ug/ml Immunofluorescence : 5ug/ml Flow Cytometry : 1-3ug/million cells Direct ELISA : 0.1-0.5ug/ml
Limitations	This Apolipoprotein E antibody is available for research use only.



Immunofluorescent staining of FFPE human U-2 OS cells with Apolipoprotein E antibody (red) and DAPI nuclear stain (blue). HIER: steam section in pH6 citrate buffer for 20 min.



Western blot testing of human Caco-2 cell lysate with Apolipoprotein E antibody.
Predicted molecular weight: 34-37 kDa.



Flow cytometry testing of fixed and permeabilized human Caco-2 cells with Apolipoprotein E antibody at 1ug/million cells (blocked with goat sera); Red=cells alone, Green=isotype control, Blue= Apolipoprotein E antibody.

Description

Apolipoprotein E is also known as APOE, AD2 or LPG. The protein encoded by this gene is a major apoprotein of the chylomicron. It binds to a specific liver and peripheral cell receptor, and is essential for the normal catabolism of triglyceride-rich lipoprotein constituents. This gene maps to chromosome 19 in a cluster with the related apolipoprotein C1 and C2 genes. Mutations in this gene result in familial dysbetalipoproteinemia, or type III hyperlipoproteinemia (HLP III), in which increased plasma cholesterol and triglycerides are the consequence of impaired clearance of chylomicron and VLDL remnants. Alternative splicing results in multiple transcript variants.

Application Notes

Optimal dilution of the Apolipoprotein E antibody should be determined by the researcher.

Immunogen

E. coli-derived recombinant human protein (amino acids E95-Q222) was used as the immunogen for the Apolipoprotein E antibody.

Storage

After reconstitution, the Apolipoprotein E antibody can be stored for up to one month at 4oC. For long-term, aliquot and store at -20oC. Avoid repeated freezing and thawing.