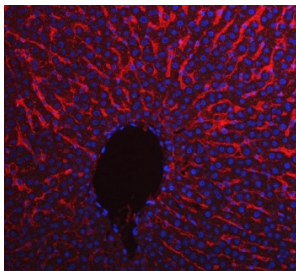


Apolipoprotein E Antibody / ApoE (R32471)

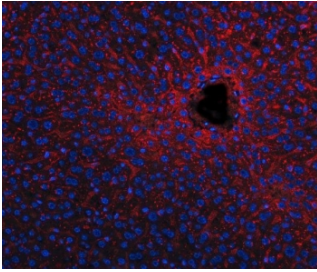
Catalog No.	Formulation	Size
R32471	0.5mg/ml if reconstituted with 0.2ml sterile DI water	100 ug

[Bulk quote request](#)

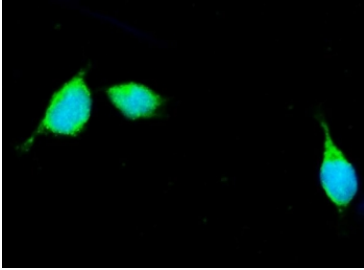
Availability	1-3 business days
Species Reactivity	Mouse, Rat
Format	Antigen affinity purified
Host	Rabbit
Clonality	Polyclonal (rabbit origin)
Isotype	Rabbit IgG
Purity	Antigen affinity
Buffer	Lyophilized from 1X PBS with 2.5% BSA and 0.025% sodium azide
UniProt	P08226
Localization	Cytoplasmic, membranous
Applications	Western Blot : 0.5-1ug/ml Immunohistochemistry (FFPE) : 1-2ug/ml Immunofluorescence : 5ug/ml
Limitations	This Apolipoprotein E antibody is available for research use only.



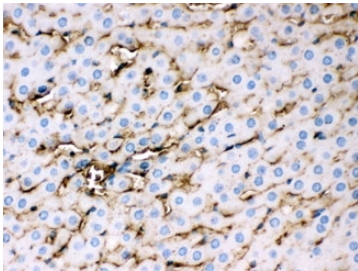
Immunofluorescent staining of FFPE rat liver tissue with Apolipoprotein E antibody (red) and DAPI nuclear stain (blue). HIER: steam section in pH8 EDTA buffer for 20 min.



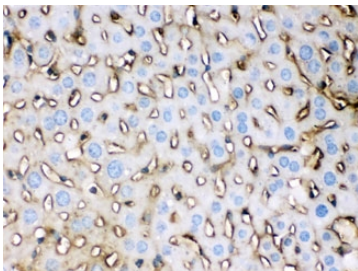
Immunofluorescent staining of FFPE mouse liver tissue with Apolipoprotein E antibody (red) and DAPI nuclear stain (blue). HIER: steam section in pH8 EDTA buffer for 20 min.



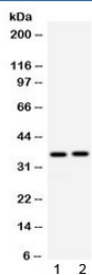
Immunofluorescent staining of FFPE mouse HEPA1-6 cells with Apolipoprotein E antibody (green) and DAPI nuclear stain (blue). HIER: steam section in pH6 citrate buffer for 20 min.



IHC testing of FFPE rat liver with APOE antibody at 1ug/ml. HIER: steam in pH6 citrate buffer and allow to cool prior to staining.



IHC testing of FFPE mouse liver with APOE antibody at 1ug/ml. HIER: steam in pH6 citrate buffer and allow to cool prior to staining.



Western blot testing of 1) mouse spleen and 2) mouse kidney lysate with APOE antibody at 0.5ug/ml. Predicted molecular weight: 34-37 kDa.

Description

ApoE is also known as AD2 or LPG. The protein encoded by this gene is a major apoprotein of the chylomicron. It binds to a specific liver and peripheral cell receptor, and is essential for the normal catabolism of triglyceride-rich lipoprotein constituents. This gene maps to chromosome 19 in a cluster with the related apolipoprotein C1 and C2 genes. Mutations in this gene result in familial dysbetalipoproteinemia, or type III hyperlipoproteinemia (HLP III), in which increased plasma cholesterol and triglycerides are the consequence of impaired clearance of chylomicron and VLDL remnants. Alternative splicing results in multiple transcript variants.

Application Notes

Optimal dilution of the Apolipoprotein E antibody should be determined by the researcher.

Immunogen

Amino acids D55-Q294 were used as the immunogen for the Apolipoprotein E antibody.

Storage

Prior to reconstitution, store at 4oC. After reconstitution, the Apolipoprotein E antibody can be stored for up to one month at 4oC. For long-term, aliquot and store at -20oC. Avoid repeated freezing and thawing.