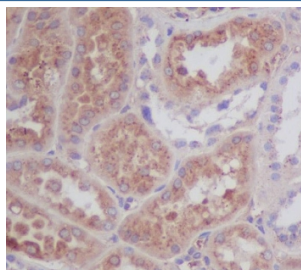


## Apolipoprotein E Antibody / APOE [clone AbA15] (RQ4478)

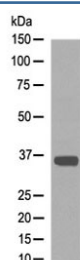
Catalog No.	Formulation	Size
RQ4478	Antibody in PBS with 0.02% sodium azide, 50% glycerol and 0.4-0.5mg/ml BSA	100 ul

[Bulk quote request](#)

Availability	1-2 weeks
Species Reactivity	Human, Mouse
Format	Purified
Clonality	Rabbit Monoclonal
Isotype	Rabbit IgG
Clone Name	AbA15
Purity	Protein A affinity
UniProt	P02649
Localization	Cytoplasmic, membranous
Applications	Western Blot : 1:500-1:2000 Immunohistochemistry (FFPE) : 1:50-1:200
Limitations	This Apolipoprotein E antibody is available for research use only.



IHC testing of FFPE human kidney with Apolipoprotein E antibody at 1ug/ml. HIER: boil tissue sections in pH6, 10mM citrate buffer, for 10-20 min followed by cooling at RT for 20 min.



Western blot testing of human blood serum lysate with Apolipoprotein E antibody at 0.5ug/m. Predicted molecular weight: 34-37 kDa.

## Description

Mediates the binding, internalization, and catabolism of lipoprotein particles. It can serve as a ligand for the LDL (apo B/E) receptor and for the specific apo-E receptor (chylomicron remnant) of hepatic tissues. [UniProt]

## Application Notes

Optimal dilution of the Apolipoprotein E antibody should be determined by the researcher.

## Immunogen

A synthetic peptide from human Apolipoprotein E was used as the immunogen for the Apolipoprotein E antibody.

## Storage

Store the Apolipoprotein E antibody at -20oC.