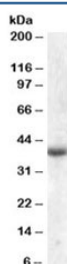


APOL6 Antibody (R33395)

Catalog No.	Formulation	Size
R33395-100UG	0.5 mg/ml in 1X TBS, pH7.3, with 0.5% BSA (US sourced) and 0.02% sodium azide	100 ug

[Bulk quote request](#)

Availability	1-3 business days
Species Reactivity	Human
Format	Antigen affinity purified
Host	Goat
Clonality	Polyclonal (goat origin)
Isotype	Goat Ig
Purity	Antigen affinity
Gene ID	80830
Applications	Western Blot : 1-3ug/ml ELISA (peptide) LOD : 1:2000
Limitations	This APOL6 antibody is available for research use only.



Western blot testing of human skeletal muscle lysate with APOL6 antibody at 2ug/ml.
Predicted molecular weight: ~38kDa.

Description

Additional name(s) for this target protein: Apolipoprotein L6; APOL-VI; APOLVI

Application Notes

Optimal dilution of the APOL6 antibody should be determined by the researcher.

Immunogen

Amino acids DDIDKTHKKFTKAN were used as the immunogen for this APOL6 antibody.

Storage

Aliquot and store the APOL6 antibody at -20oC.