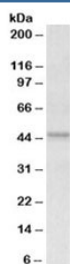


APOL1 Antibody (R34869)

Catalog No.	Formulation	Size
R34869-100UG	0.5 mg/ml in 1X TBS, pH7.3, with 0.5% BSA (US sourced) and 0.02% sodium azide	100 ug

[Bulk quote request](#)

Availability	1-3 business days
Species Reactivity	Human
Format	Antigen affinity purified
Host	Goat
Clonality	Polyclonal (goat origin)
Isotype	Goat Ig
Purity	Antigen affinity
Gene ID	8542
Applications	Western Blot : 0.1-0.3ug/ml ELISA (peptide) LOD : 1:16000
Limitations	This APOL1 antibody is available for research use only.



Western blot testing of human placenta lysate with APOL1 antibody at 0.1ug/ml.
Predicted molecular weight: ~44/46/42kDa (isoforms 1/2/3).

Description

Additional name(s) for this target protein: Apolipoprotein L 1, APOL, APOL-I

Application Notes

Optimal dilution of the APOL1 antibody should be determined by the researcher.

Immunogen

Amino acids NNNYKILQADQE were used as the immunogen for this APOL1 antibody.

Storage

Aliquot and store the APOL1 antibody at -20°C.