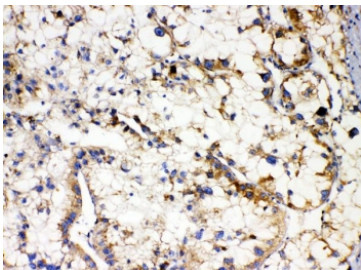


APOL1 Antibody / Apolipoprotein L1 (RQ5570)

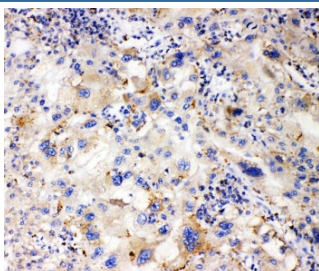
Catalog No.	Formulation	Size
RQ5570	0.5mg/ml if reconstituted with 0.2ml sterile DI water	100 ug

[Bulk quote request](#)

Availability	1-3 business days
Species Reactivity	Human
Format	Antigen affinity purified
Host	Rabbit
Clonality	Polyclonal (rabbit origin)
Isotype	Rabbit IgG
Purity	Affinity purified
Buffer	Lyophilized from 1X PBS with 2% Trehalose and 0.025% sodium azide
UniProt	O14791
Applications	Western Blot : 0.25-0.5ug/ml Immunohistochemistry (FFPE) : 1-2ug/ml Direct ELISA : 0.1-0.5ug/ml
Limitations	This APOL1 antibody is available for research use only.



IHC staining of FFPE human liver cancer with APOL1 antibody. HIER: boil tissue sections in pH6, 10mM citrate buffer, for 20 min and allow to cool before testing.



IHC staining of FFPE human liver cancer with APOL1 antibody. HIER: boil tissue sections in pH6, 10mM citrate buffer, for 20 min and allow to cool before testing.

KDa
180-
130-
95-
72-
55-
43-
34-
26-
17-

Western blot testing of human plasma lysate with APOL1 antibody. Predicted molecular weight: ~44 kDa.

Description

Apolipoprotein L1 is a protein that in humans is encoded by the APOL1 gene. It is mapped to 22q12.3. This gene encodes a secreted high density lipoprotein which binds to apolipoprotein A-I. Apolipoprotein A-I is a relatively abundant plasma protein and is the major apoprotein of HDL. It is involved in the formation of most cholesteryl esters in plasma and also promotes efflux of cholesterol from cells. This apolipoprotein L family member may play a role in lipid exchange and transport throughout the body, as well as in reverse cholesterol transport from peripheral cells to the liver. Several different transcript variants encoding different isoforms have been found for this gene.

Application Notes

Optimal dilution of the APOL1 antibody should be determined by the researcher.

Immunogen

A human recombinant protein (amino acids M228-L398) was used as the immunogen for the APOL1 antibody.

Storage

After reconstitution, the APOL1 antibody can be stored for up to one month at 4°C. For long-term, aliquot and store at -20°C. Avoid repeated freezing and thawing.