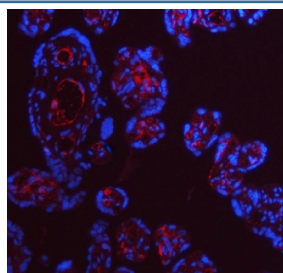


ApoE Antibody (R31740)

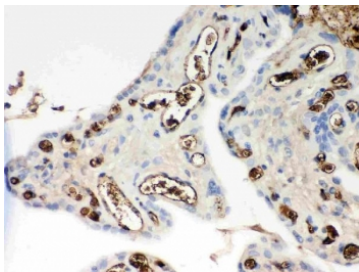
| Catalog No. | Formulation | Size |
|-------------|-------------------------------------------------------|--------|
| R31740 | 0.5mg/ml if reconstituted with 0.2ml sterile DI water | 100 ug |

Bulk quote request

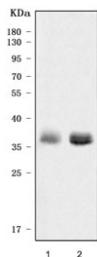
| | |
|---------------------------|-------------------------------------------------------------------------------------------------------------------------------------------------------------------------------------------------------|
| Availability | 1-3 business days |
| Species Reactivity | Human |
| Format | Antigen affinity purified |
| Clonality | Polyclonal (rabbit origin) |
| Isotype | Rabbit IgG |
| Purity | Antigen affinity |
| Buffer | Lyophilized from 1X PBS with 2.5% BSA and 0.025% sodium azide |
| Gene ID | 348 |
| Localization | Cytoplasmic, membranous |
| Applications | Western Blot : 0.5-1ug/ml Immunohistochemistry (FFPE) : 0.5-1ug/ml ELISA (Capture; Recombinant Human Protein) : 1-5ug/ml Immunofluorescence : 5ug/ml Flow Cytometry : 1-3ug/million cells |
| Limitations | This ApoE antibody is available for research use only. |



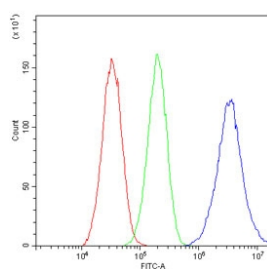
Immunofluorescent staining of FFPE human placental tissue with ApoE antibody (red) and DAPI nuclear stain (blue). HIER: steam section in pH8 EDTA buffer for 20 min.



IHC staining of FFPE human placental tissue with ApoE antibody. HIER: boil tissue sections in pH6 citrate buffer for 20 min and allow to cool before testing.



Western blot testing of 1) human placenta and 2) human HepG2 cell lysate with ApoE antibody. Predicted molecular weight: 34-37 kDa.



Flow cytometry testing of human HepG2 cells with ApoE antibody at 1ug/million cells (blocked with goat sera); Red=cells alone, Green=isotype control, Blue= ApoE antibody.

Description

Apolipoprotein E, also known as AD2 or LPG, is a major apoprotein of the chylomicron. It binds to a specific liver and peripheral cell receptor, and is essential for the normal catabolism of triglyceride-rich lipoprotein constituents. The gene maps to chromosome 19 in a cluster with the related apolipoprotein C1 and C2 genes. Mutations in ApoE result in familial dysbetalipoproteinemia, or type III hyperlipoproteinemia (HLP III), in which increased plasma cholesterol and triglycerides are the consequence of impaired clearance of chylomicron and VLDL remnants. Alternative splicing results in multiple ApoE transcript variants.

Application Notes

The stated application concentrations are suggested starting amounts. Titration of the ApoE antibody may be required due to differences in protocols and secondary/substrate sensitivity.

Immunogen

Human partial recombinant protein (AA 19-317) was used as the immunogen for this ApoE antibody.

Storage

After reconstitution, the ApoE antibody can be stored for up to one month at 4°C. For long-term, aliquot and store at -20°C. Avoid repeated freezing and thawing.

