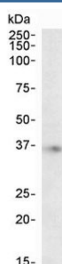


APOE Antibody / Apolipoprotein E (R36329)

Catalog No.	Formulation	Size
R36329-100UG	0.5 mg/ml in 1X TBS, pH7.3, with 0.5% BSA (US sourced) and 0.02% sodium azide	100 ug

[Bulk quote request](#)

Availability	1-3 business days
Species Reactivity	Human
Format	Antigen affinity purified
Clonality	Polyclonal (goat origin)
Isotype	Goat Ig
Purity	Antigen affinity
Gene ID	348
Localization	Cytoplasmic, membranous
Applications	Western Blot : 1-3ug/ml ELISA (peptide) LOD : 1:2000
Limitations	This APOE antibody is available for research use only.



Western blot testing of human brain (hippocampus) lysate with APOE antibody at 2ug/ml. Predicted molecular weight ~36 kDa.

Description

Additional name(s) for this target protein: Apolipoprotein E

Application Notes

Optimal dilution of the APOE antibody should be determined by the researcher.

Immunogen

Amino acids VGTSAAPVPSDNH were used as the immunogen for this APOE antibody.

Storage

Aliquot and store the APOE antibody at -20oC.