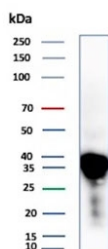


## APOE Antibody / Apolipoprotein E [clone APOE/3673] (V5402)

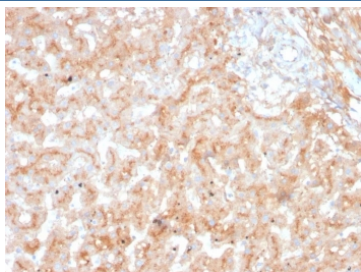
Catalog No.	Formulation	Size
V5402-100UG	0.2 mg/ml in 1X PBS with 0.1 mg/ml BSA (US sourced), 0.05% sodium azide	100 ug
V5402-20UG	0.2 mg/ml in 1X PBS with 0.1 mg/ml BSA (US sourced), 0.05% sodium azide	20 ug
V5402SAF-100UG	1 mg/ml in 1X PBS; BSA free, sodium azide free	100 ug

[Bulk quote request](#)

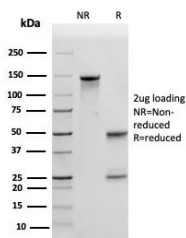
<b>Availability</b>	1-3 business days
<b>Species Reactivity</b>	Human
<b>Format</b>	Purified
<b>Clonality</b>	Monoclonal (mouse origin)
<b>Isotype</b>	Mouse IgG1, kappa
<b>Clone Name</b>	APOE/3673
<b>Purity</b>	Protein A/G affinity
<b>UniProt</b>	P02649
<b>Localization</b>	Secreted
<b>Applications</b>	Immunohistochemistry (FFPE) : 1-2ug/ml Western Blot : 2-4ug/ml
<b>Limitations</b>	This APOE antibody is available for research use only.



Western blot testing of human liver tissue lysate with APOE antibody (clone APOE/3673). Predicted molecular weight: 34-37 kDa.



IHC staining of FFPE human adrenal gland tissue with APOE antibody (clone APOE/3673). HIER: boil tissue sections in pH 9 10mM Tris with 1mM EDTA for 20 min and allow to cool before testing.



SDS-PAGE analysis of purified, BSA-free APOE antibody (clone APOE/3673) as confirmation of integrity and purity.

## Description

APOE is an apolipoprotein, a protein associating with lipid particles, that mainly functions in lipoprotein-mediated lipid transport between organs via the plasma and interstitial fluids. [UniProt]

## Application Notes

Optimal dilution of the APOE antibody should be determined by the researcher.

## Immunogen

A human recombinant Apolipoprotein E protein fragment (within amino acids 19-119) was used as the immunogen for the APOE antibody.

## Storage

Aliquot the APOE antibody and store frozen at -20oC or colder. Avoid repeated freeze-thaw cycles.