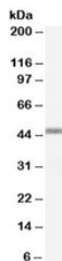


## APOBEC3G Antibody (R33416)

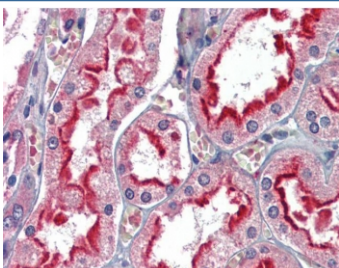
Catalog No.	Formulation	Size
R33416-100UG	0.5 mg/ml in 1X TBS, pH7.3, with 0.5% BSA (US sourced) and 0.02% sodium azide	100 ug

[Bulk quote request](#)

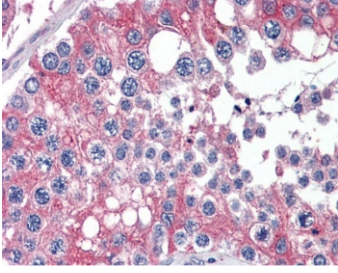
<b>Availability</b>	1-3 business days
<b>Species Reactivity</b>	Human
<b>Format</b>	Antigen affinity purified
<b>Clonality</b>	Polyclonal (goat origin)
<b>Isotype</b>	Goat Ig
<b>Purity</b>	Antigen affinity
<b>Gene ID</b>	60489
<b>Localization</b>	Cytoplasmic, membranous
<b>Applications</b>	Western Blot : 0.5-1.5ug/ml IHC (FFPE) : 2.5ug/ml ELISA (peptide) LOD : 1:16000
<b>Limitations</b>	This APOBEC3G antibody is available for research use only.



Western blot testing of Daudi lysate with APOBEC3G antibody at 0.5ug/ml. Predicted molecular weight: ~46 kDa.



IHC testing of FFPE human kidney tissue with APOBEC3G antibody at 2.5ug/ml. Required HIER: steamed antigen retrieval with pH6 citrate buffer; AP-staining.



IHC testing of FFPE human testis tissue with APOBEC3G antibody at 2.5ug/ml.  
Required HIER: steamed antigen retrieval with pH6 citrate buffer; AP-staining.

## Description

Additional name(s) for this target protein: Apolipoprotein B mRNA editing enzyme, catalytic polypeptide-like 3G

## Application Notes

Optimal dilution of the APOBEC3G antibody should be determined by the researcher.

## Immunogen

Amino acids DEHSQDLSGRLR were used as the immunogen for this APOBEC3G antibody.

## Storage

Aliquot and store the APOBEC3G antibody at -20oC.