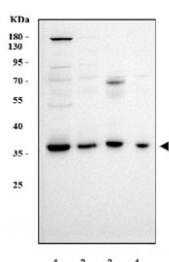


APOBEC3B Antibody / A3B (RQ7298)

Catalog No.	Formulation	Size
RQ7298	0.5mg/ml if reconstituted with 0.2ml sterile DI water	100 ug

Bulk quote request

Availability	1-3 business days
Species Reactivity	Human
Format	Antigen affinity purified
Clonality	Polyclonal (rabbit origin)
Isotype	Rabbit IgG
Purity	Antigen affinity purified
Buffer	Lyophilized from 1X PBS with 2% Trehalose
UniProt	Q9UH17
Applications	Western Blot : 0.5-1ug/ml
Limitations	This APOBEC3B antibody is available for research use only.



Western blot testing of human 1) HepG2, 2) Jurkat, 3) ThP-1 and 4) HEK293 cell lysate with APOBEC3B antibody. Predicted molecular weight ~46 kDa, but commonly observed at 35-46 kDa.

Description

Probable DNA dC->dU-editing enzyme APOBEC-3B is a protein that in humans is encoded by the APOBEC3B gene. This gene is a member of the cytidine deaminase gene family. It is one of seven related genes or pseudogenes found in a cluster, thought to result from gene duplication, on chromosome 22. Members of the cluster encode proteins that are structurally and functionally related to the C to U RNA-editing cytidine deaminase APOBEC1. It is thought that the proteins may be RNA editing enzymes and have roles in growth or cell cycle control. A hybrid gene results from the deletion of approximately 29.5 kb of sequence between this gene, APOBEC3B, and the adjacent gene APOBEC3A. The breakpoints of the deletion are within the two genes, so the deletion allele is predicted to have the promoter and coding region of APOBEC3A, but the 3' UTR of APOBEC3B. Two transcript variants encoding different isoforms have been

found for this gene.

Application Notes

Optimal dilution of the APOBEC3B antibody should be determined by the researcher.

Immunogen

Amino acids FNNDPLVLRRRQTYLCYEVEER were used as the immunogen for the APOBEC3B antibody.

Storage

After reconstitution, the APOBEC3B antibody can be stored for up to one month at 4°C. For long-term, aliquot and store at -20°C. Avoid repeated freezing and thawing.