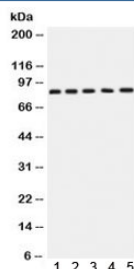


APLP1 Antibody (N-Terminal Region) (R32129)

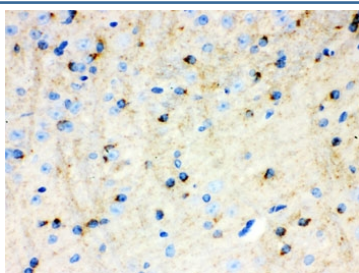
Catalog No.	Formulation	Size
R32129	0.5mg/ml if reconstituted with 0.2ml sterile DI water	100 ug

Bulk quote request

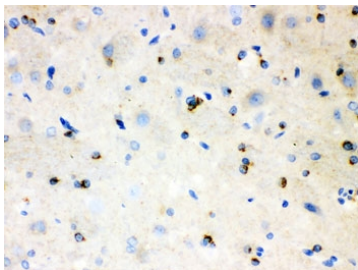
Availability	1-3 business days
Species Reactivity	Human, Mouse, Rat
Format	Antigen affinity purified
Clonality	Polyclonal (rabbit origin)
Isotype	Rabbit IgG
Purity	Antigen affinity
Buffer	Lyophilized from 1X PBS with 2.5% BSA and 0.025% sodium azide
UniProt	P51693
Localization	Cytoplasmic, membrane
Applications	Western Blot : 0.1-0.5ug/ml IHC (FFPE) : 0.5-1ug/ml
Limitations	This APLP1 antibody is available for research use only.



Western blot testing of 1) rat brain, 2) rat testis, 3) human SGC-7901, 4) 22RV1 and 5) MCF7 lysate with APLP1 antibody. Expected molecular weight: 76 kDa (unmodified), ~86 kDa (soluble/glycosylated form), 92~95 kDa (mature form).



IHC testing of FFPE mouse brain with APLP1 antibody. HIER: Boil the paraffin sections in pH 6, 10mM citrate buffer for 20 minutes and allow to cool prior to staining.



IHC testing of FFPE rat brain with APLP1 antibody. HIER: Boil the paraffin sections in pH 6, 10mM citrate buffer for 20 minutes and allow to cool prior to staining.

Description

Amyloid-precursor-like protein 1 (APLP1) is a membrane-associated glycoprotein, whose gene is homologous to the APP gene, which has been shown to be involved in the pathogenesis of Alzheimer's disease. APLP1 is predominantly expressed in brain, particularly in the cerebral cortex postsynaptic density. The human gene has been mapped to chromosomal region 19q13.1. The gene is 11.8 kb long and contains 17 exons. APLP1 has been considered a candidate gene for CNF. All exon regions of the gene were amplified by the polymerase chain reaction and sequenced from DNA of CNF patients. No differences were observed between CNF patients and controls, suggesting that mutations in APLP1 are not involved in the etiology of CNF.

Application Notes

Optimal dilution of the APLP1 antibody should be determined by the researcher.

Immunogen

Amino acids 82-112 (RRCLRDPQVRVLEYCRQMYPELQIARVEQATQ) of human APLP1 were used as the immunogen for the APLP1 antibody.

Storage

After reconstitution, the APLP1 antibody can be stored for up to one month at 4°C. For long-term, aliquot and store at -20°C. Avoid repeated freezing and thawing.

References (1)