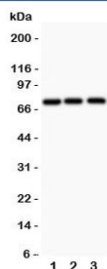


APLP1 Antibody (N-Terminal Region) (R31208)

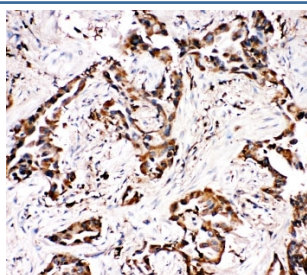
Catalog No.	Formulation	Size
R31208	0.5mg/ml if reconstituted with 0.2ml sterile DI water	100 ug

Bulk quote request

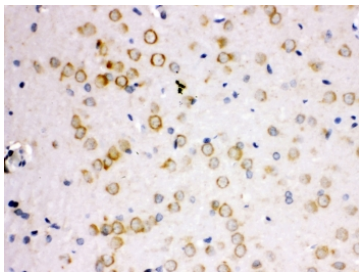
Availability	1-3 business days
Species Reactivity	Human, Mouse, Rat
Format	Antigen affinity purified
Clonality	Polyclonal (rabbit origin)
Isotype	Rabbit IgG
Purity	Antigen affinity
Buffer	Lyophilized from 1X PBS with 2.5% BSA and 0.025% sodium azide/thimerosal
UniProt	P51693
Localization	Cytoplasmic, membrane
Applications	Western Blot : 0.5-1ug/ml IHC (FFPE) : 0.5-1ug/ml
Limitations	This APLP1 antibody is available for research use only.



Western blot testing of APLP1 antibody and 1) human HeLa, 2) rat PC-12, and 3) mouse HEPA1-6 lysate; Expected molecular weight: 76 kDa (unmodified), ~86 kDa (soluble/glycosylated form), 92~95 kDa (mature form).



IHC-P: APLP1 antibody testing of human lung cancer tissue. Required HIER: steam section in pH6 citrate buffer for 20 min and allow to cool prior to tetsting.



IHC-P: APLP1 antibody testing of rat brain tissue. Required HIER: steam section in pH6 citrate buffer for 20 min and allow to cool prior to tetsting.

Description

Amyloid-precursor-like protein 1 is a membrane-associated glycoprotein, whose gene is homologous to the APP gene, which has been shown to be involved in the pathogenesis of Alzheimers disease. APLP1 is predominantly expressed in brain, particularly in the cerebral cortex postsynaptic density. The human gene has been mapped to chromosomal region 19q13.1. The gene is 11.8 kb long and contains 17 exons. APLP1 has been considered a candidate gene for CNF. All exon regions of the gene were amplified by the polymerase chain reaction and sequenced from DNA of CNF patients. No differences were observed between CNF patients and controls, suggesting that mutations in APLP1 are not involved in the etiology of CNF.

Application Notes

The stated application concentrations are suggested starting amounts. Titration of the APLP1 antibody may be required due to differences in protocols and secondary/substrate sensitivity.

Immunogen

Amino acids 101-120 from human Amyloid-precursor-like protein 1 (ELQIARVEQATQAIPMERWC) were used as the immunogen for this APLP1 antibody.

Storage

After reconstitution, the APLP1 antibody can be stored for up to one month at 4oC. For long-term, aliquot and store at -20oC. Avoid repeated freezing and thawing.

References (1)