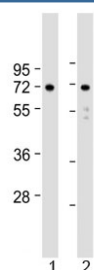


## APLP1 Antibody (C-Terminal Region) (F54145)

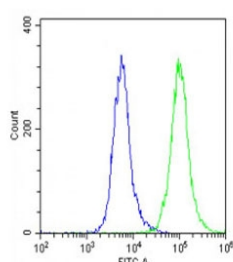
Catalog No.	Formulation	Size
F54145-0.2ML	In 1X PBS, pH 7.4, with 0.09% sodium azide	0.2 ml
F54145-0.05ML	In 1X PBS, pH 7.4, with 0.09% sodium azide	0.05 ml

[Bulk quote request](#)

<b>Availability</b>	1-3 business days
<b>Species Reactivity</b>	Human
<b>Format</b>	Antigen affinity purified
<b>Host</b>	Rabbit
<b>Clonality</b>	Polyclonal (rabbit origin)
<b>Isotype</b>	Rabbit Ig
<b>Purity</b>	Antigen affinity
<b>UniProt</b>	P51693
<b>Applications</b>	Western Blot : 1:1000-1:2000 Flow Cytometry : 1:25 per million cells
<b>Limitations</b>	This APLP1 antibody is available for research use only.



Western blot testing of human 1) U-251 MG and 2) U-87 MG cell lysate with APLP1 antibody at 1:2000. Expected molecular weight: 76 kDa (unmodified), ~86 kDa (soluble/glycosylated form), 92~95 kDa (mature form).



Flow cytometry testing of fixed and permeabilized human U-87 MG cells with APLP1 antibody; Blue=isotype control, Green= APLP1 antibody.

## Description

Amyloid-like protein 1 may play a role in postsynaptic function. The C-terminal gamma-secretase processed fragment, ALID1, activates transcription activation through APBB1 (Fe65) binding (By similarity). Couples to JIP signal transduction through C-terminal binding. May interact with cellular G-protein signaling pathways. Can regulate neurite outgrowth through binding to components of the extracellular matrix such as heparin and collagen I.

## Application Notes

The stated application concentrations are suggested starting points. Titration of the APLP1 antibody may be required due to differences in protocols and secondary/substrate sensitivity.

## Immunogen

A portion of amino acids 505-539 from human Amyloid-like protein 1 was used as the immunogen for the APLP1 antibody.

## Storage

Aliquot the APLP1 antibody and store frozen at -20oC or colder. Avoid repeated freeze-thaw cycles.