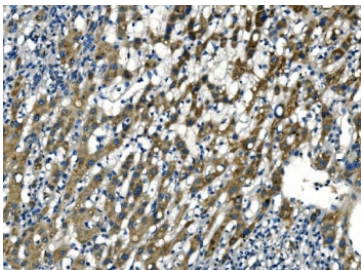


APLN Antibody / APEL / Apelin (RQ7057)

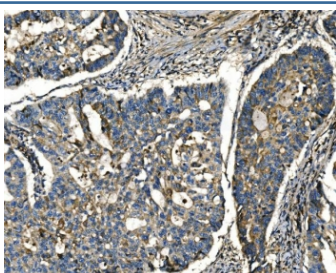
Catalog No.	Formulation	Size
RQ7057	0.5mg/ml if reconstituted with 0.2ml sterile DI water	100 ug

Bulk quote request

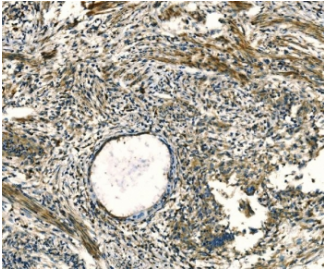
Availability	1-3 business days
Species Reactivity	Human
Format	Antigen affinity purified
Host	Rabbit
Clonality	Polyclonal (rabbit origin)
Isotype	Rabbit IgG
Purity	Antigen affinity purified
Buffer	Lyophilized from 1X PBS with 2% Trehalose
UniProt	Q9ULZ1
Applications	Immunohistochemistry (FFPE) : 2-5ug/ml Direct ELISA : 0.1-0.5ug/ml
Limitations	This APLN antibody is available for research use only.



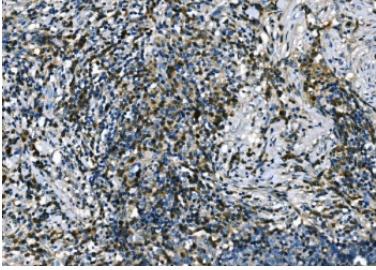
IHC staining of FFPE human liver cancer tissue with APLN antibody. HIER: boil tissue sections in pH8 EDTA for 20 min and allow to cool before testing.



IHC staining of FFPE human adenocarcinoma of the right colon tissue with APLN antibody. HIER: boil tissue sections in pH8 EDTA for 20 min and allow to cool before testing.



IHC staining of FFPE human cervical cancer tissue with APLN antibody. HIER: boil tissue sections in pH8 EDTA for 20 min and allow to cool before testing.



IHC staining of FFPE human lung cancer tissue with APLN antibody. HIER: boil tissue sections in pH8 EDTA for 20 min and allow to cool before testing.

Description

Apelin is a neuropeptide expressed in the supraoptic and paraventricular nuclei that acts on specific receptors located on vasopressinergic neurons. The apelin gene to Xq25-q26.3 based on sequence similarity between the apelin sequence and a chromosome X PAC clone. This gene encodes a peptide that functions as an endogenous ligand for the G protein coupled receptor APJ. The encoded protein is synthesized as a prepropeptide that is processed into biologically active C-terminal fragments. The peptide fragments activate different tissue specific signaling pathways that regulate diverse biological functions including fluid homeostasis, cardiovascular function and insulin secretion. This protein also functions as a coreceptor for the human immunodeficiency virus 1.

Application Notes

Optimal dilution of the APLN antibody should be determined by the researcher.

Immunogen

Recombinant human protein (amino acids S24-F77) was used as the immunogen for the APLN antibody.

Storage

After reconstitution, the APLN antibody can be stored for up to one month at 4oC. For long-term, aliquot and store at -20oC. Avoid repeated freezing and thawing.